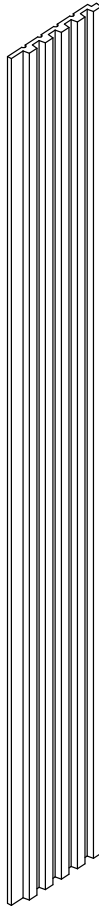


INSTALLATION GUIDE



WATERPROOF SLAT WALL PANELLING Installation instructions

GENERAL INFORMATION

- Panels should be installed with our waterproof Hybrid Grab Adhesive
- The Installer should have basic technical knowledge and be familiar with safety precautions
- Prior to installation lay the boards in the room where they are to be installed for 24 hours to adjust to room temperature
- End trims are available as an optional finishing detail
- Avoid areas of increased temperatures (above 60°C) such as a sauna, chimney or an area near a cooker for example.
- The product is only suitable for indoor applications.
- The product can be installed in damp areas, such as bathrooms.
- If installing in areas in direct contact with water the vertical edges and ends should be sealed with a sealant.
- Made from recyclable material.
- Any non-compliance with the instructions will void the product's warranty

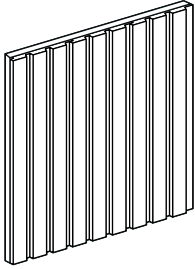
ADDITIONAL INFORMATION

- No additional weight should be applied to the boards and neither is it suitable as a weight bearing element in construction
- Hangers or shelves should not be screwed directly into the board
- Instead they should be mounted into the surface on which the board is mounted using suitable anchors for the surface.

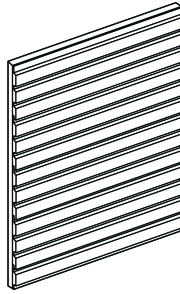
TOOLS REQUIRED

- Pencil
- Tape Measure
- Spirit Level
- Hybrid Grab Adhesive
- Sealant Gun
- Clear Sanitary Silicone (For Wet Areas)
- Fine tooth saw

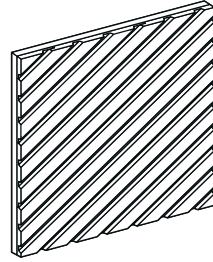
INSTALLATION OPTIONS



Vertically



Horizontally



Diagonally

CUTTING PANELS

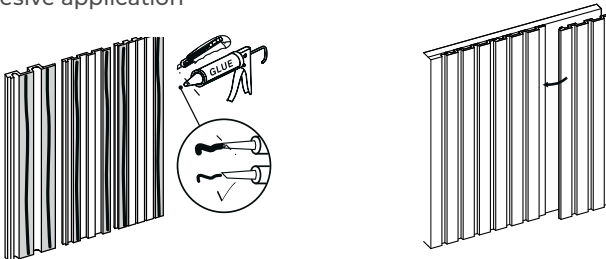
Measure where you want to cut.

- Mark the panel with a pencil.
- Place the panel face up and cut along the line using a fine toothed hand saw.

INSTALLATION WALL TO WALL

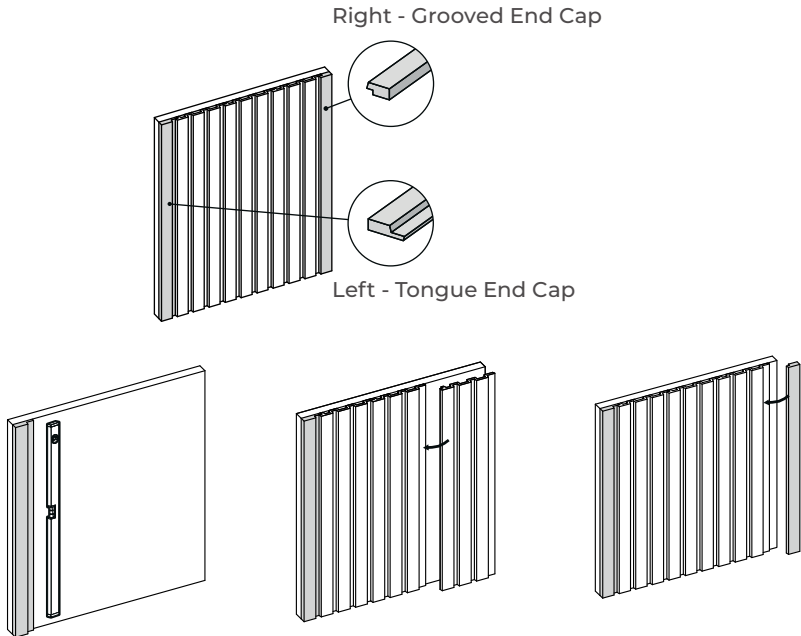
- Apply adhesive along the length of each raised ridge on the back of the panel
- Working left to right place the first panel with the tongue to the right
- Press firmly to adhere the panel to the wall.
- Continue the above process ensuring the panels overlap.
- Apply a clear silicone seal to the joint if the area is expected to be exposed to water.
- Wipe away any excess sealant prior to fixing the next panel.

Adhesive application



INSTALLATION USING EDGE CAPS

- Mark a vertical line using the spirit level
- Start on the left with the tongued end cap
- Apply the adhesive to the end cap and fix in place
- Continue left to right with the panels.
- Finish with a grooved end cap



CLEANING

- Clean the panels using a mild detergent
- Do not allow stains to dry
- Do not use water at a temperature of more than 40°C or strong detergents for cleaning as these may discolour the panels.