

# JG Speedfit®

## THE PUSH-FIT SOLUTION FOR PLUMBING & HEATING SYSTEMS

*Speedfit Fittings are suitable for use with copper pipe.*



*Celebrating 50 Years of Innovation*



*Includes these **NEW** additions:*

- *Overlay Heating System*
- *Manifolds*
- *Wireless Heating Control System*
- + *Many More*

## **UK Product Guide**

*March 2011*

# **John Guest**<sup>®</sup> *Worldwide connections*

The John Guest Group has a long established reputation as a world leading manufacturer of push-in fittings, tube and other fluid control products. A reputation built on producing consistently high quality products with an ongoing commitment to value engineering and product development.



# Quality Manufacture

**A commitment to quality is at the heart of the John Guest Philosophy.**

The strictest control is maintained by virtue of the fact that design and manufacture is carried out in modern purpose built manufacturing centres in west London and at Maidenhead in Berkshire.

Maintaining control over the whole process from initial tool design and tool making through to final assembly and testing ensuring that only products of the highest quality are produced.

The company believe it is this commitment to quality that has led to it receiving prestigious awards from many of the world's leading testing and approvals organisations.

John Guest is a preferred supplier to many international companies.



FM01977



BS7291  
KM39767



**kiwa**

Speedfit PEX Fittings and Barrier Pipe.  
K24076, K24077 and K24078.



THE UNDERFLOOR  
HEATING  
MANUFACTURING ASSOCIATION

**British Gas  
Service**



*The code of practice for the installation,  
commissioning & servicing of gas fires and wall heaters*

## THE PUSH-FIT SOLUTION FOR PLUMBING AND HEATING SYSTEMS

JG Speedfit is a push-fit system suitable for the plumbing of domestic hot and cold water services and central heating applications, including pressurised and combi systems.

The System is approved by the British Board of Agrément and the Water Regulations Advisory Scheme. Speedfit 'PEM' fittings and PEX and Polybutylene Barrier Pipe are Kitemarked to BS7291 Parts 1, 2 and 3 Class S Licence No KM39767.

## SYSTEM FEATURES

- Truly demountable without damage to pipe or fitting
- Grip and seal connection
- Superseal Insert gives secondary seal
- Reduced pipe insertion force
- Lightweight and easy to handle on site



Performance specifications are well within those required for most central heating and water supply systems including:

- Mains fed and indirect cold water systems
- Vented and unvented hot water systems
- Vented central heating systems
- Sealed central heating systems provided temperatures and pressures comply with BS7291 Parts 1, 2 and 3 Class S
- Underfloor heating

Extensive tests have shown that Speedfit products will withstand temperatures and pressures well in excess of normal working conditions.

**JG Speedfit** should be installed to conform with good plumbing practice.

**Speedfit should not be used for gas, fuel oil or compressed air applications.**

### Technical Support

Our national team of Technical Support Engineers is available to help you get the best from your **Speedfit** System. This includes a free underfloor heating estimate and CAD design service.

**Technical Help Desk: 01895-425333**

The **JG Speedfit** Technical Advisory Service is available to assist and advise on the aspects of the **Speedfit** System. The service is available 8:00am to 5:00pm Monday to Friday.

## SYSTEM BENEFITS

- Installation time reduced by up to 40%
- Pipe flexibility permits the cabling of pipe through less accessible areas
- No risk of fire or flames from a blowtorch
- Easier to work in confined places
- A permanent leak-proof connection
- Corrosion free
- No scale build up
- Lower thermal diffusivity maintains safer surface temperature
- Pipe elasticity can reduce the possibility of bursting under freezing conditions
- Lead free and non toxic
- Less noise from water flow and expansion/contraction
- Long pipe lengths reduce fittings required

## GUARANTEE

As a result of long term test programmes and rigorous quality standards, John Guest Speedfit Limited offer a 25 year guarantee against the defects in materials or manufacturing of 'PEM', 'PSE' and 'SFM' Range Plumbing Fittings and Speedfit Barrier Pipe manufactured by John Guest.

John Guest Underfloor Heating Products, Brass Manifolds and Radiator Valves, which should be installed and maintained in accordance with our recommendations, carry a 2 year guarantee from date of delivery against defects in materials and manufacture.

John Guest Plumbing and Heating Products are for use with normal UK domestic plumbing and heating systems and supplied in accordance with our Conditions of Sale.

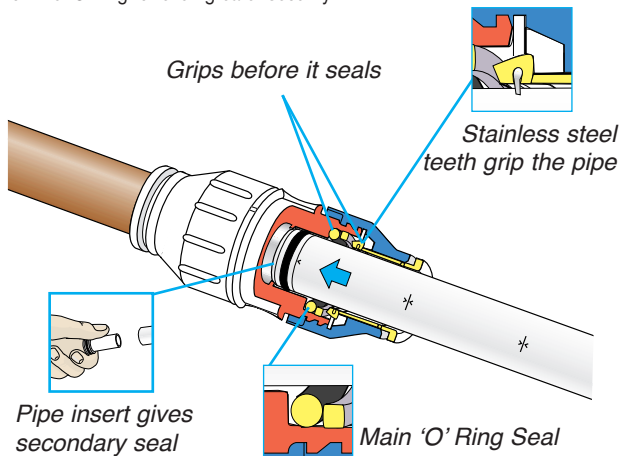
## HOW SPEEDFIT WORKS

Speedfit Fittings have a unique grip then seal construction, made up of a collet with stainless steel teeth to grip the pipe and an 'O' ring to provide a permanent leak proof seal.

Use of the **Superseal Pipe Insert** ensures a double 'O' ring seal.

The head of the insert has been designed for ease of insertion.

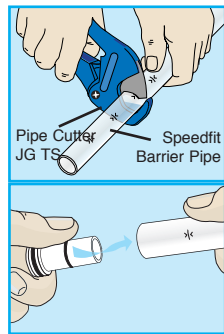
The additional benefit of Twist and Lock Fittings is that a twist of a screwcap locks the pipe in position and gives increased compression on the 'O' ring for even greater security.



## MAKING A GOOD CONNECTION

### PREPARE THE PIPE

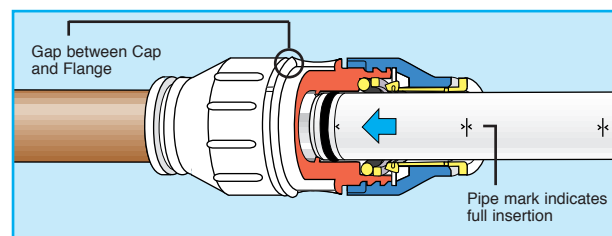
Fittings and pipe should be kept clean bagged and undamaged before use.



Ensure the pipe is free of score marks. Cut the pipe square. When using Speedfit Barrier Pipe cut along an insertion mark. We recommend the use of JG Pipe Cutters.

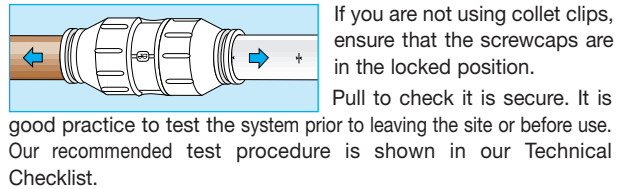
To prevent damage to the 'O' ring remove all burrs and sharp edges. When connecting Speedfit Pipe use a Superseal Pipe Insert or a Standard Speedfit Pipe Insert. A twisting motion will aid insertion. The insert should only be used with Speedfit Pipe.

### NEW TWIST AND LOCK FITTINGS

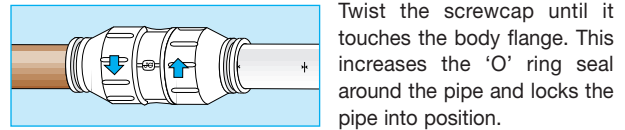


The fitting should be in the 'unlocked' position, this is shown with a small gap between the screwcap and the body flange.

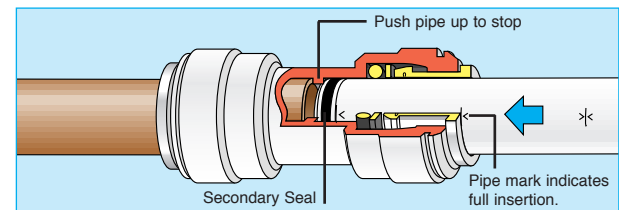
Push the pipe fully into the fitting, up to the pipe stop. If the Speedfit Pipe has been cut correctly the insertion mark on the pipe will be level with the collet head. The 'O' ring on the Superseal Pipe Insert provides a secondary seal against the bore of the fitting. A good connection has been made.



### ADDED BENEFIT TWIST AND LOCK

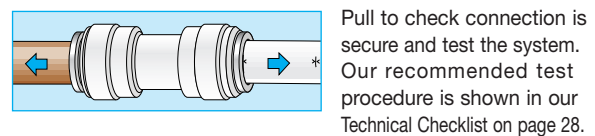


### STANDARD SPEEDFIT FITTINGS



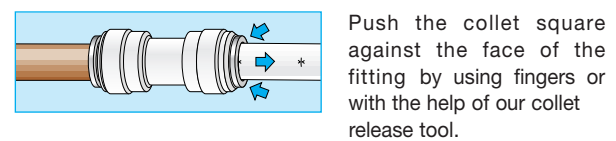
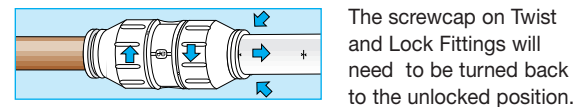
Standard Speedfit connections are made in the same way as Twist and Lock.

Push Pipe up to Pipe Stop. If the Speedfit Pipe has been cut correctly the insertion mark on the pipe will be level with the collet head.



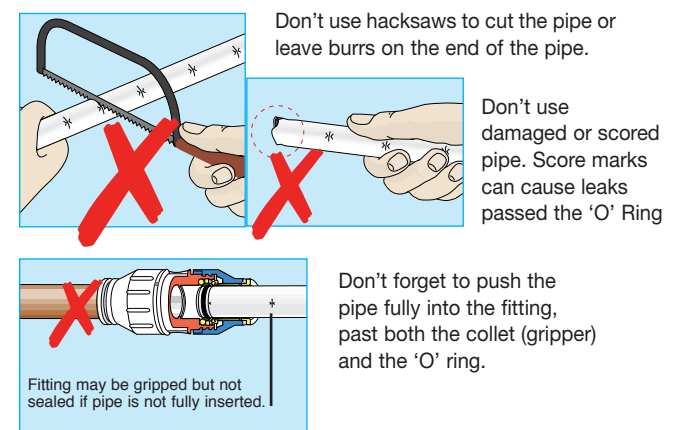
## TO DISCONNECT

Ensure that the system is depressurised.



With the collet held in position the pipe can be removed. The fitting can be used again without the need for replacement parts.

## WHAT NOT TO DO



Do not insert fingers into the fitting as the stainless steel teeth may cause injury.

Remember to pressure test the completed installation according to the recommendations in our Technical Checklist.

# CONTENTS:

**White Push Fit Fittings**

Page 5 & 6



**Energy Saver Plus**

Page 17



**Grey Push Fit Fittings**

Page 7 & 8



**Underfloor Heating Network Controls**

Page 18



**Other Plumbing Fittings**

Page 8



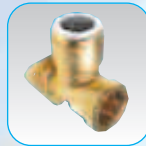
**Underfloor Heating Mains Voltage Controls**

Page 19



**Brass Fittings**

Page 9



**Room Packs**

Page 19



**Valves**

Page 9 & 10



**Underfloor Heating Wireless Controls**

Page 20



**Braided Flexi Hoses**

Page 11



**Manifolds and Fixing Systems**

Page 20 & 21



**White Flexi Hoses**

Page 12



**Merchandising**

Page 22 & 23



**Pipe and Accessories**

Page 13 & 14



**Pre Packed Products**

Page 24 to 27



**Speedfit Blue Fittings for MDPE**

Page 15 & 16



**Conditions of Sale & Technical Checklist**

Page 28 to 30



## WHITE PLUMBING FITTINGS

### EQUAL STRAIGHT CONNECTOR



PART No.	SIZE MM	BAG QTY	SMALL BOX	LARGE BOX
PEM0410W	10	10	150	
PEM0415W	15	10	60	400
PEM0422W	22	5	30	200
PEM0428W	28		25	

Suitable for central heating systems.

### REDUCING STRAIGHT COUPLER



PART No.	SIZE MM	BAG QTY	BOX QTY
PEM201510W	15 x 10	10	80
PEM202215W	22 x 15	5	40

Suitable for central heating systems.

### PE-COPPER COUPLER



Used to connect PE Pipe to copper or Speedfit Plumbing Pipe. Must not be buried directly into ground, soil, concrete or other substrates.

PART No.	SIZE MM	BAG QTY	BOX QTY
UG601B	20 x 15	1	150
UG603B	25 x 15	1	100
UG602B	25 x 22	1	80
UG604B	32 x 28	1	60

Cold water only

\* Taken from the range of Speedfit Fittings for Cold Water Services. See separate section for details and Technical Specification.

### EQUAL ELBOW



PART No.	SIZE MM	BAG QTY	SMALL BOX	LARGE BOX
PEM0310W	10	10	150	1000
PEM0315W	15	10	50	400
PEM0322W	22	5	25	150
PEM0328W	28		15	

Suitable for central heating systems.

### REDUCING ELBOW



NEW

PART No.	SIZE MM	BAG QTY	BOX QTY
PEM211510W	15 x 10		
PEM212215W	22 x 15	5	40

Suitable for central heating systems.

### STEM ELBOW



PART No.	PIPE MM	STEM MM	BAG QTY	SMALL BOX	LARGE BOX
PEM221010W	10	10	10	200	
PEM221015W	10	15	10	150	
PEM221515W	15	15	10	80	500
PEM222222W	22	22	5	30	TBA

Suitable for central heating systems.

Provides a swivel type connection.

Please note a Collet Cover cannot be used on a Speedfit end assembled with the stem of a 22mm Stem Elbow.

### EQUAL TEE



PART No.	SIZE MM	BAG QTY	SMALL BOX	LARGE BOX
PEM0210W	10	10	100	
PEM0215W	15	5	40	250
PEM0222W	22	5	15	100
PEM0228W	28		10	

Suitable for central heating systems.

### REDUCING TEE



Sizes listed as follows.



PART No.	SIZE MM	BAG QTY	SMALL BOX	LARGE BOX
PEM3015BW	15x10x10	10	60	
PEM3015AW	15x15x10	5	40	
PEM3022CW	15x15x22	5	25	
PEM3022BW	22x15x15	5	25	150
PEM3022DW	22x15x22	5	15	150
PEM302210AW	22x22x10	5	20	
PEM3022AW	22x22x15	5	15	
PEM3028BW	28x22x22		10	
PEM3028DW	28x22x28		10	
PEM302810AW	28x28x10		15	
PEM302815AW	28x28x15		10	
PEM3028AW	28x28x22		10	

Suitable for central heating systems.

### STEM TEE



Sizes listed as follows.



PART No.	SIZE MM	BAG QTY	BOX QTY
PEM532210W	22x22x10	5	30
PEM532215W	22x22x15	5	25

Suitable for central heating systems.

### FEMALE COUPLER - TAP CONNECTOR



Requires hand tightening only.

PART No.	SIZE MM X BSP	BAG QTY	SMALL BOX	LARGE BOX
PSE3210W	10 x 1/2"	10	150	250
PSE3201W	15 x 1/2"	10	100	600
PSE3203W	15 x 3/4"	5	70	
PSE3202W	22 x 3/4"	5	50	400

Suitable for central heating systems.

Note: Plastic threads are not as strong as metal threads. For torque figures see Technical Checklist.

### STRAIGHT TAP CONNECTOR



PART No.	SIZE MM X BSP	BAG QTY	BOX QTY
PEMSTC1014	10 x 1/2"	10	150
PEMSTC1514	15 x 1/2"	5	50
PEMSTC1516	15 x 3/4"	5	50
PEMSTC2216	22 x 3/4"	5	40

Suitable for central heating systems.

With brass swivel nut and sealing washer. For torque figures see Technical Checklist.

## BENT TAP CONNECTOR



PART No.	SIZE MM X BSP	BAG QTY	BOX QTY
PEMBTC1014	10 x 1/2"	10	150
PEMBTC1514	15 x 1/2"	5	50

Suitable for central heating systems.

With brass swivel nut and sealing washer.  
For torque figures see Technical Checklist.

## STOP END



PART No.	SIZE MM	BAG QTY	SMALL BOX	LARGE BOX
PSE4610W	10	10	300	500
PSE4615W	15	10	200	1000
PSE4622W	22	5	80	500
PSE4628W	28	5	50	

Suitable for central heating systems.

## REDUCER



PART No.	SIZE MM	BAG QTY	SMALL BOX	LARGE BOX
PEM061510W	15 x 10	10	150	1000
PEM062215W	22 x 15	10	70	
PEM062815W	28 x 15	5	40	
PEM062822W	28 x 22	5	30	

Suitable for central heating systems.

## TANK CONNECTOR



Requires hand tightening only.

Maximum wall thickness of tank = 4mm.

PART No.	SIZE MM	BAG QTY	BOX QTY
CM0715S	15	10	60
CM0722S	22	5	20
CM0728S	28		10

Suitable for cold water tanks only.

## PLUG



PART No.	SIZE MM	BAG QTY	BOX QTY
PL10	10	10	500
PL15	15	10	250
PL22	22	10	100
PL28	28	10	50

Suitable for central heating systems.

## PIPE REPAIR KIT



PART No.	SIZE MM	BAG QTY	BOX QTY
15RKP	15	1	80
22RKP	22	1	50

Suitable for central heating systems.

Provides a simple way of repair on a rigid pipe run.  
Remove a damaged section of pipe and replace with a repair kit

## SLIP TEE CONNECTOR



PART No.	SIZE MM	BAG QTY	BOX QTY
15TKP	15	1	80
22TKP	22	1	40

Suitable for central heating systems.

Provides a simple way to break into an existing pipe run

## PLASTIC BACK PLATE ELBOW



PART No.	SIZE MM X BSP	BAG QTY	BOX QTY
15PWB	15 x 1/2"	1	25

Hot and cold water only, 65°C maximum.  
Protect from sunlight and frost.

## WING BACK ELBOW



PART No.	SIZE MM X BSPT	BAG QTY	BOX QTY
UGPW1514	15 x 1/2"	1	150

Cold water only

## BULKHEAD ELBOW



PART No.	SIZE MM X BSP	BOX QTY
CM551516W	15mm x 3/4"	25

Not suitable for central heating systems.  
Hot and cold water only, 65°C maximum.

## 2 WAY DIVIDER



PART No.	SIZE MM	BAG QTY	BOX QTY
CM2315W	15	5	50

Not suitable for central heating systems.

## 4 WAY MANIFOLD



PART No.	SIZE MM	BAG QTY	BOX QTY
SFM512210E	22 x 10	5	30

Suitable for central heating systems.

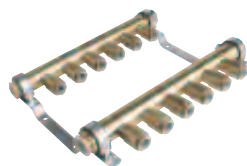
## 4 PORT RAIL MANIFOLD



PART No.	SIZE MM	BOX QTY
SFM522210E	22 x 10	10
SFM522215E	22 x 15	10

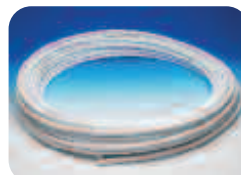
Suitable for central heating systems.

## BRASS RAIL MANIFOLD



PART No.	SIZE MM	BOX QTY
JGRAIL4	4 Zone	22 x 15
JGRAIL6	6 Zone	22 x 15
JGRAIL12	12 Zone	22 x 15

Suitable for central heating systems.



FOR PIPE SEE PAGE 13

## GREY PLUMBING FITTINGS

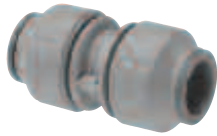
Additional range of Speedfit Grey Products, with the same features and benefits of white fittings.

Kitemarked to BS 7291 and with WRAS Approval.



BS7291  
KM39767

### EQUAL STRAIGHT CONNECTOR



PART No.	SIZE MM	BAG QTY	BOX QTY
PEM0410DG	10	10	150
PEM0415DG	15	10	60
PEM0422DG	22	5	30

Suitable for central heating systems.

### REDUCING STRAIGHT COUPLER



PART No.	SIZE MM	BAG QTY	BOX QTY
PEM201510DG	15 x 10	10	80
PEM202215DG	22 x 15	5	40

Suitable for central heating systems.

### EQUAL ELBOW



PART No.	SIZE MM	BAG QTY	BOX QTY
PEM0310DG	10	10	150
PEM0315DG	15	10	50
PEM0322DG	22	5	25

Suitable for central heating systems.

### STEM ELBOW



PART No.	PIPE MM	STEM MM	BAG QTY	BOX QTY
PEM221010DG	10	x 10	10	200
PEM221515DG	15	x 15	10	80

Suitable for central heating systems

Provides a swivel type connection.

### REDUCER



PART No.	SIZE MM	BAG QTY	BOX QTY
PEM061510DG	15 x 10	10	150
PEM062215DG	22 x 15	10	70

Suitable for central heating systems.

### EQUAL TEE



PART No.	SIZE MM	BAG QTY	BOX QTY
PEM0210DG	10	10	100
PEM0215DG	15	5	40
PEM0222DG	22	5	15

Suitable for central heating systems.

### REDUCING TEE



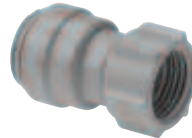
PART No.	SIZE MM	BAG QTY	BOX QTY
PEM3022BDG	22 x 15 x 15	5	25
PEM3022DDG	22 x 15 x 22	5	15
PEM302210ADG	22 x 22 x 10	5	20
PEM3022ADG	22 x 22 x 15	5	15

Suitable for central heating systems.

Sizes are listed in the following order.



### FEMALE COUPLER - TAP CONNECTOR



PART No.	SIZE MM X BSP	BAG QTY	BOX QTY
PSE3201DG	15mm x 1/2"	10	100
PSE3203DG	15mm x 3/4"	5	70
PSE3202DG	22mm x 3/4"	5	50

Suitable for central heating systems

Requires hand tightening only.

Note: Plastic threads are not as strong as metal threads.

For torque figures see Technical Checklist.

### STOP END



PART No.	SIZE MM	BAG QTY	BOX QTY
PSE4610DG	10	10	300
PSE4615DG	15	10	200
PSE4622DG	22	5	80
PSE4628DG	28	5	50

Suitable for central heating systems.

### STRAIGHT TAP CONNECTOR



PART No.	SIZE MM X BSP	BAG QTY	BOX QTY
PEMSTC1514-DG	15mm x 1/2"	5	50
PEMSTC1516-DG	15mm x 3/2"	5	50
PEMSTC2216-DG	22mm x 3/4"	5	40

Suitable for central heating systems.

For torque figures see Technical Checklist.

With brass swivel nut and sealing washer.



## BENT TAP CONNECTOR



PART No.	SIZE MM X BSP	BAG QTY	Box Qty
PEMBTC1514-DG	15mm x 1/2"	5	50

Suitable for central heating systems.  
For torque figures see Technical Checklist.

With brass swivel nut and sealing washer.

## APPLIANCE TAP



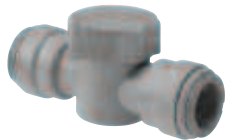
PART No.	SIZE MM X BSP	BAG QTY	Box Qty
15 APT-DG	15mm x 3/4"	5	40

Not suitable for central heating systems.

Hot and Cold water only, 65°C maximum.

For torque figures on plastic threads please see Technical Checklist.

## EMERGENCY SHUT OFF TAP



PART No.	SIZE MM	BAG QTY	Box Qty
15 ESOT-DG	15	5	40

Not suitable for central heating systems.

Hot and Cold water only, 65°C maximum.



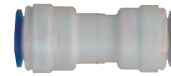
FOR PIPE SEE PAGE 13



FOR DISPLAY STAND SEE PAGE 22

## OTHER PLUMBING FITTINGS

### CONVERSION CONNECTOR



Connects imperial to metric pipe.

PART No.	SIZE	BAG QTY	Box Qty
NC471	1/2id x 15mm	5	500
NC2324	3/4id x 22mm	5	30

Suitable for central heating systems.

### SLIP CONNECTOR



PART No.	SIZE MM	BAG QTY	Box Qty
CM-SC-15S	15	10	60

Not suitable for central heating systems.  
Hot and Cold water only, 65°C maximum.

### HOSE CONNECTOR



PART No.	SIZE	Box Qty
NC448	15mm x 1/2"	1000
NC473	22mm x 3/4"	400
NC737	22mm x 1/2"	500

Not suitable for central heating systems.  
Hot and cold water only, 65°C maximum.

### UNEQUAL STRAIGHT CONNECTOR



PART No.	SIZE MM X INCH	BAG QTY	Box Qty
NC2511	15mm x 3/8"	10	150

Not suitable for central heating systems.  
Hot and cold water only, 65°C maximum.

**1/4 Turn Valves.** These valves have been designed to allow temporary servicing of downstream equipment and must only be used in the fully open or fully closed position.

Do Not use these Valves:

- In a partially open position to control flow.
- To provide a permanent termination.
- Without tubing assembled or plugged (or threaded connections sealed).
- As a tap or "faucet".

1/4 Turn Valves are indicated by this marker '•'

## BRASS FITTINGS

### BRASS MALE COUPLER



PART No.	SIZE	BAG QTY	BOX QTY
MW011504N	15mm x 1/2" BSPT	5	100
MW012206N	22mm x 3/4" BSPT	5	50
MW012808N	28mm x 1" BSPT	5	20
10MC (1/2)	10mm x 1/2" BSP	5	100
15MC (1/2)	15mm x 1/2" BSP	5	100
22MC (3/4)	22mm x 3/4" BSP	5	50
MW012818N	28mm x 1" BSP	5	20

Suitable for central heating systems.

Manufactured in DZR Brass.

### BRASS FEMALE COUPLER



PART No.	SIZE MM X BSP	BAG QTY	BOX QTY
MW451514N	15 x 1/2"	5	50
MW452216N	22 x 3/4"	5	50

Suitable for central heating systems.  
Manufactured in DZR Brass.

### BRASS BACK PLATE ELBOW



PART No.	SIZE MM X BSP	BOX QTY
15WB	15 x 1/2"	20
22WB	22 x 3/4"	10

Manufactured in DZR Brass.  
Suitable for central heating systems.  
SHORT VERSION

15WB2	15 x 1/2"	25
-------	-----------	----

Manufactured in Brass.  
Suitable for central heating systems.

### BRASS MALE STEM ADAPTOR



Converts Speedfit to male thread

PART No.	SIZE MM X BSPT	BAG QTY	BOX QTY
MW051504N	15 x 1/2"	5	100
MW052206N	22 x 3/4"	5	50
MW052818N	28 x 1" BSP	10	20

Suitable for central heating systems.  
Manufactured in DZR Brass.

### BRASS FEMALE STEM ADAPTOR



Converts Speedfit to female thread

PART No.	SIZE MM X BSP	BAG QTY	BOX QTY
MW501514N	15 x 1/2"	5	50
MW502216N	22 x 3/4"	5	50

Suitable for central heating systems.  
Manufactured in DZR Brass.

### BRASS FEMALE CYLINDER ADAPTOR



PART No.	SIZE MM X BSP	BAG QTY	BOX QTY
22CFA	22 x 1"	5	50

Suitable for central heating systems.  
Manufactured in DZR Brass.

### BRASS MALE CYLINDER ADAPTOR



PART No.	SIZE MM X BSP	BAG QTY	BOX QTY
22CMA	22 x 1"	5	50

Suitable for central heating systems.  
Manufactured in DZR Brass.

## VALVES

**1/4 Turn Valves.** These valves have been designed to allow temporary servicing of downstream equipment and must only be used in the fully open or fully closed position.

Do Not use these Valves:

- In a partially open position to control flow.
- To provide a permanent termination.
- Without tubing assembled or plugged (or threaded connections sealed).
- As a tap or "faucet".

1/4 Turn Valves are indicated by this marker '•'

### STOP VALVE



PART No.	SIZE MM	BOX QTY
15STV	15	20
22STV	22	10

Not suitable for central heating systems.  
Hot and Cold water only, 65°C maximum.

### APPLIANCE TAP •



PART No.	SIZE MM X BSP	BAG QTY	BOX QTY
15 APT	15 x 3/4"	5	40

Not suitable for central heating systems.  
For maximum torque figures on plastic thread, please see Technical Checklist.

### APPLIANCE TEE •



PART No.	SIZE MM X BSP	BAG QTY	BOX QTY
15 APT2	15 x 3/4"	5	30

Not suitable for central heating systems.  
Hot and Cold water only, 65°C maximum.

### EMERGENCY SHUT OFF TAP •



PART No.	SIZE MM	BAG QTY	BOX QTY
15 ESOT	15	5	40

Not suitable for central heating systems.  
Hot and Cold water only, 65°C maximum.

### ANGLE STOP VALVE •



PART No.	SIZE MM X INCH	PACK QTY	BOX QTY
ASV3	15 x 1/4"	1	30
ASV4	15 x 3/8"	1	25

Not suitable for central heating systems.  
Hot and Cold water only, 65°C maximum.  
Provides an inline connection with shut off and check valve protection for the easy installation of water coolers, filtration equipment and vending machines.

### DOUBLE CHECK VALVE



PART No.	SIZE MM	BAG QTY	BOX QTY
15DCV	15	5	50

Not suitable for central heating systems.  
Hot and Cold water only, 65°C maximum.

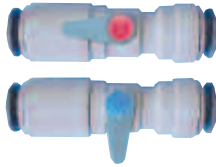
## PLASTIC SERVICE VALVE



PART No.	SIZE MM	BAG QTY	Box QTY
15SV	15	5	50
22SV	22		30

Not suitable for central heating systems.  
Hot and Cold water only, 65°C maximum.

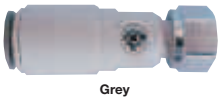
## PLASTIC BALL VALVE



PART No.	SIZE MM	PACK QTY	Box QTY
15SV-H	15	1	40
22SV-H	22	1	20

Not suitable for central heating systems.  
Each valve has red and blue indices.

## PLASTIC SERVICE VALVE WITH TAP CONNECTOR



Grey

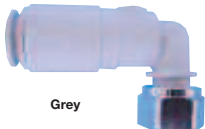


White

PART No.	SIZE MM X BSP	BAG QTY	Box QTY
15SVSTC	15 x 1/2"	5	50
15SVSTC-W	15 x 1/2"	5	50

Not suitable for central heating systems.  
Hot and Cold water only, 65°C maximum.

## PLASTIC ANGLE SERVICE VALVE WITH TAP CONNECTOR



Grey



White

PART No.	SIZE MM X BSP	BAG QTY	Box QTY
15SVBTC	15 x 1/2"	5	50
15SVBTC-W	15 x 1/2"	5	50

Not suitable for central heating systems.  
Hot and Cold water only, 65°C maximum.

## BRASS SERVICE VALVE



PART No.	SIZE MM	PACK QTY	Box QTY
15HSV-BRASS	15	2	20

Suitable for central heating systems.

## BRASS CHROME PLATED SERVICE VALVE



PART No.	SIZE MM	PACK QTY	Box QTY
10HSV	10	1	30
15HSV	15	2	20
22HSV	22	1	8

Suitable for central heating systems.

## BRASS CHROME PLATED SERVICE VALVE WITH TAP CONNECTOR



PART No.	SIZE MM X BSP	PACK QTY	Box QTY
15PTSV	15 x 1/2"	2	20
22PTSV	22 x 3/4"	1	8

Suitable for central heating systems.

## BRASS CHROME PLATED BALL VALVE



PART No.	SIZE MM	PACK QTY	Box QTY
10BV	10	1	30
15BV	15	1	20
22BV	22	1	15

Suitable for central heating systems.

Each valve has red and blue indices.



## BRASS MANIFOLD



NEW

PART No.	DESCRIPTION	SIZE BSP X MM	PACK QTY	Box QTY
JGMAN2	2 Port	3/4" x 15	1	10
JGMAN3	3 Port	3/4" x 15	1	7
JGMAN4	4 Port	3/4" x 15	1	5

Blanking plug supplied with each manifold.  
Each manifold supplied with reversible red and blue discs.

Suitable for central heating systems.

## BRASS STOP VALVE



PART No.	SIZE MM X BSP	BAG QTY	Box QTY
15BSC	15	1	10

Only suitable for central heating systems.

Manufactured in DZR Brass.

## BRASS DRAIN COCK



PART No.	SIZE MM	BAG QTY	Box QTY
15BDC	15	10	50

Suitable for central heating systems.

Manufactured in DZR Brass.

Speedfit Drain Cocks cannot be used where collet covers are fitted. They can be used with a standard fitting fitted with a collet clip.

## THERMOSTATIC RADIATOR VALVE



NEW

PART No.	SIZE MM	PACK QTY	Box QTY
JGTHRAD15	15	1	10

## LOCKSHIELD RADIATOR VALVE



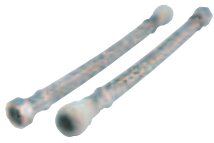
NEW

PART No.	SIZE MM	PACK QTY	Box QTY
JGRAD15	15	1	20

**BRAIDED FLEXI HOSES** **WRAS**  
*Not suitable for central heating.*  
*Hot and cold water only, 6 Bar @ 65°C*


APPROVED PRODUCT

## SPEEDFIT X UNION NUT




	PART No.	SIZE MM X BSP	BAG QTY	BOX QTY
150mm	FLX43P	15 x 1/2"	2	150
300mm	FLX34P	10 x 1/2"	2	150
	FLX35P	15 x 3/8"	2	150
	FLX15P	15 x 1/2"	2	100
	FLX16P	15 x 3/4"	2	100
	FLX22P	22 x 3/4"	2	100
500mm	FLX18P	15 x 1/2"	2	100
	FLX20P	15 x 3/4"	2	80
	FLX19P	22 x 3/4"	2	50
	FLX23P <sup>Full Bore</sup>	22 x 3/4"	2	40
1000mm	FLX40P	15 x 1/2"	1	20
	FLX42	15 x 3/4"	5	25
	FLX41P	22 x 3/4"	1	20

## SPEEDFIT X SPEEDFIT




	PART No.	SIZE MM X MM	BAG QTY	BOX QTY
300mm	FLX33P	15 x 10	2	150
	FLX17P	15 x 15	2	100
	FLX26P	22 x 22	2	60
500mm	FLX21P	15 x 15	2	100
	FLX27P	22 x 22	2	60
1000mm	FLX47	15 x 15	5	25

## SPEEDFIT X MALE



	PART No.	SIZE MM X BSP	BAG QTY	BOX QTY
300mm	FLX49	15 x 3/8"	25	100

## ELBOW PATTERN




	PART No.	SIZE MM X BSP	BAG QTY	BOX QTY
300mm	FLX36P	15 x 1/2"	2	100

## SPEEDFIT X PLAIN STEM



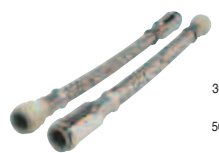
	PART No.	PIPE MM	STEM MM	BAG QTY	BOX QTY
300mm	FLX53	15	15	25	100

## SPEEDFIT X UNION NUT WITH SERVICE VALVE




	PART No.	SIZE MM X BSP	BAG QTY	BOX QTY
<b>Plastic Valves</b>				
300mm	FLX37P	15 x 1/2"	2	100
	FLX39P	22 x 3/4"	2	50
<b>Plastic Valve with Handle</b>				
300mm	FLX37-H	15 x 1/2"	2	100
	FLX39-H	22 x 3/4"	2	50

## SPEEDFIT X SPEEDFIT WITH SERVICE VALVE



	PART No.	SIZE MM X MM	BAG QTY	BOX QTY
<b>Brass Valve</b>				
300mm	FLX44P	15 x 15	2	80
500mm	FLX45P	15 x 15	2	60

## FOR MONOBLOC MIXERS

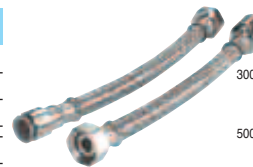


	PART No.	SIZE MM X MALE	BAG QTY	BOX QTY
300mm	FLX48	12 x M10	2	100
	FLX28	15 x M10	2	100
	FLX29	15 x M12	2	100

## BRAIDED FLEXI HOSES with Metal Connections


*Not suitable for central heating.*  
*Hot and cold water only, 10 Bar @ 85°C, 12.5 Bar @ 20°C*

## SPEEDFIT X UNION NUT




	PART No.	SIZE MM X BSP	BAG QTY	BOX QTY
300mm	FLX15MP	15 x 1/2"	2	80
	FLX22MP	22 x 3/4"	2	80
500mm	FLX18MP	15 x 1/2"	2	60
	FLX19MP	22 x 3/4"	2	50

## SPEEDFIT X SPEEDFIT



	PART No.	SIZE MM X MM	BAG QTY	BOX QTY
300mm	FLX17MP	15 x 15	2	80
500mm	FLX21MP	15 x 15	2	60

## SPEEDFIT X UNION NUT WITH SERVICE VALVE



	PART No.	SIZE MM X BSP	BAG QTY	BOX QTY
<b>Brass Valve</b>				
300mm	FLX24P	15 x 1/2"	2	80
	FLX25P	22 x 3/4"	2	30
500mm	FLX31P	15 x 1/2"	2	50
	FLX38P	15 x 3/4"	2	50
	FLX32P	22 x 3/4"	2	30

**1/4 Turn Valves.** These valves have been designed to allow temporary servicing of downstream equipment and must only be used in the fully open or fully closed position.

Do Not use these Valves:

- In a partially open position to control flow.
- To provide a permanent termination.
- Without tubing assembled or plugged (or threaded connections sealed).
- As a tap or "faucet".

1/4 Turn Valves are indicated by this marker '•'

## WHITE FLEXI HOSES

Not suitable for central heating.

Hot and cold water only, 6 Bar @ 65°C



### SPEEDFIT X UNION NUT



	PART No.	SIZE MM X BSP	BAG QTY	Box QTY
300mm	WFLX15	15 x 1/2"	2	100
	WFLX16	15 x 3/4"	2	100
	WFLX22	22 x 3/4"	2	100
500mm	WFLX18	15 x 1/2"	2	100
	WFLX20	15 x 3/4"	2	100
	WFLX19	22 x 3/4"	2	50
1000mm	WFLX40	15 x 1/2"	1	20

### SPEEDFIT X SPEEDFIT



	PART No.	SIZE MM X MM	BAG QTY	Box QTY
300mm	WFLX33	15 x 10	2	100
	WFLX17	15 x 15	2	100
500mm	WFLX21	15 x 15	2	100

### SPEEDFIT X PLAIN STEM



	PART No.	PIPE MM	STEM MM	BAG QTY	Box QTY
200mm	WFLX51	15	15	2	200

### ELBOW PATTERN



	PART No.	SIZE MM X BSP	BAG QTY	Box QTY
300mm	WFLX36	15 x 1/2"	2	100

### SPEEDFIT X UNION NUT WITH SERVICE VALVE \*



	PART No.	SIZE MM X BSP	BAG QTY	Box QTY
300mm	<b>Plastic Valve with Handle</b>			
	WFLX37-H	15 x 1/2"	2	100
	WFLX39-H	22 x 3/4"	2	50

### FOR MONOBLOC MIXERS



	PART No.	SIZE MM X MALE	PACK QTY	Box QTY
300mm	WFLX28	15 x M10	2	100
	WFLX29	15 x M12	2	100

### IDENTITY DISCS



For handles on service valves.

PART No.	PACK QTY	PACK QTY
FLX-RED	10	10
FLX-BLU	10	10

## WHITE FLEXI HOSES With Plastic Wingnut

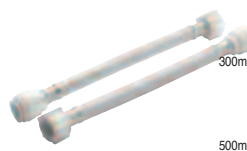
Hand tightening only, no spanner required

Not suitable for central heating.

Hot and cold water only, 6 Bar @ 65°C



### SPEEDFIT X UNION NUT



	PART No.	SIZE MM X BSP	BAG QTY	Box QTY
300mm	PFLX15	15 x 1/2"	2	100
	PFLX16	15 x 3/4"	2	100
	PFLX22	22 x 3/4"	2	80
500mm	PFLX18	15 x 1/2"	2	100
	PFLX19	22 x 3/4"	2	50

### SPEEDFIT X UNION NUT WITH SERVICE VALVE \*



	PART No.	SIZE MM X BSP	BAG QTY	Box QTY
<b>Plastic Valves</b>				
300mm	PFLX37	15 x 1/2"	2	100
500mm	PFLX78	15 x 1/2"	2	50
<b>Plastic Valve with Handle</b>				
300mm	PFLX37-H	15 x 1/2"	2	100



FOR DISPLAY STAND  
SUPPORT SEE PAGE 22

## WHITE PIPE AND ACCESSORIES

### SPEEDPEX BARRIER PIPE



British Gas accepted for water pipe in vented and sealed central heating systems.

PART No.	SIZE MM X M	PACK QTY	BOX QTY
10BPEX-25C	10 x 25	1	20
10BPEX-50C	10 x 50	1	10
10BPEX-100C	10 x 100	1	6
15BPEX-25C	15 x 25	1	8
15BPEX-50C	15 x 50	1	5
15BPEX-100C	15 x 100	1	5
15BPEX-120C	15 x 120	1	5
15BPEX-150C	15 x 150	1	4
22BPEX-25C	22 x 25	1	8
22BPEX-50C	22 x 50	1	5

Suitable for central heating systems.

### SPEEDPEX BARRIER PIPE



Straight lengths. 15 & 22mm in packs of 20. 28mm in packs of 10.

Minimum order for 6m lengths is 10 packs.

\* By special order only.

PART No.	SIZE MM X M	PACK QTY	BOX QTY
15BPEX-20x2L	15 x 2	20	
15BPEX-20x3L	15 x 3	20	
15BPEX-20x6L	15 x 6	20	
22BPEX-20x2L	22 x 2	20	
22BPEX-20x3L	22 x 3	20	
22BPEX-20x6L	22 x 6	20	
28BPEX-10x3L	28 x 3	10	
* 28BPEX-10x6L	28 x 6	10	

Suitable for central heating systems.

### POLYBUTYLENE BARRIER PIPE



British Gas accepted for water pipe in vented and sealed central heating systems.

PART No.	SIZE MM X M	PACK QTY	BOX QTY
15BPB-25C	15 x 25	1	8
15BPB-50C	15 x 50	1	5
15BPB-100C	15 x 100	1	5
15BPB-120C	15 x 120	1	5
15BPB-150C	15 x 150	1	4
15BPB-300C	15 x 300	1	
22BPB-25C	22 x 25	1	8
22BPB-50C	22 x 50	1	5

Suitable for central heating systems.

### PIPE IN PIPE



PART No.	SIZE MM X M	PACK QTY
15PIP-50C-E	15 x 50	1
22PIP-50C-E	22 x 50	1

### PIPE INSERT



To be used when connecting Speedfit Pipe to a compression fitting.

PART No.	SIZE MM	BAG QTY	SMALL BOX	LARGE BOX
TSM10N	10	50	1000	20,000
TSM15N	15	50	500	5000
TSM22N	22	25	250	2000
TSM28N	28	10	150	1000

Suitable for central heating systems.

### SUPERSEAL PIPE INSERT



To be used with Speedfit Pipe and Speedfit fittings, to give enhanced sealing.

PART No.	SIZE MM	BAG QTY	SMALL BOX	LARGE BOX
STS10	10	50	1000	12,500
STS15	15	50	500	5000
STS22	22	25	250	2000
STS28	28	10	150	1000

Suitable for central heating systems.

See page 3 for details.

## GREY PIPE AND ACCESSORIES

### PEX BARRIER PIPE



Straight lengths: The pipe has an inner barrier to stop the ingress of atmosphere.

PART No.	SIZE MM X M	PACK QTY
15BPEX-20x2L-DG	15 x 2	20
15BPEX-20x3L-DG	15 x 3	20
22BPEX-20x2L-DG	22 x 2	20
22BPEX-20x3L-DG	22 x 3	20

Suitable for central heating systems.

### POLYBUTYLENE BARRIER PIPE



MORE FLEXIBLE

Coils: The pipe has an inner barrier to stop the ingress of atmosphere.

PART No.	SIZE MM X M	PACK QTY
10BPB-50C-DG	10 x 50	1
15BPB-25C-DG	15 x 25	1
15BPB-50C-DG	15 x 50	1
22BPB-25C-DG	22 x 25	1

Suitable for central heating systems.

### PIPE INSERT

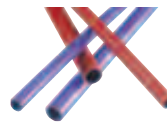


PART No.	SIZE MM	BAG QTY	BOX QTY
TSM10DG	10	50	1000
TSM15DG	15	50	500
TSM22DG	22	5	250

Suitable for central heating systems.

## RED AND BLUE PIPE AND PIPE ACCESSORIES

### RED & BLUE SPEEDPEX BARRIER PIPE



Straight Lengths. The pipe has an inner barrier to stop the ingress of air.

Minimum order quantities:  
15mm size, 20 packs of 20 lengths  
22mm size, 10 packs of 20 lengths

PART No.	SIZE MM X M	PACK QTY
15BPEX20X6L-R	15 x 6	20
22BPEX20X6L-R	22 x 6	20
15BPEX20X6L-B	15 x 6	20
22BPEX20X6L-B	22 x 6	20

### CONDUIT PIPE



Black

PART No.	SIZE MM X M	PACK QTY
15BLK CON - 25C	15 x 25	1
15BLK CON - 50C	15 x 50	1
22BLK CON - 25C	22 x 25	1
22BLK CON - 50C	22 x 50	1

Red

15RED CON - 50C	15 x 50	1
22RED CON - 50C	22 x 50	1

Blue

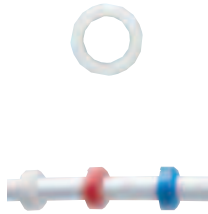
15BLU CON - 50C	15 x 50	1
22BLU CON - 50C	22 x 50	1

### CONDUIT ELBOW



PART No.	SIZE	BAG QTY	PACK QTY
CONELB	FITS 10, 15 & 22mm	10	70

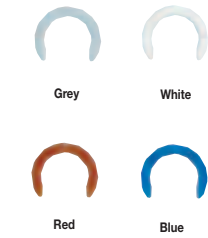
## COLLET COVER



PART No.	SIZE MM	BAG QTY	SMALL BOX	LARGE BOX
PKM1910W	10	100	500	
PKM1910R	10	100	500	
PKM1910B	10	100	500	
AM1915W	15	100	400	4000
PM1915R	15	100	400	
PM1915B	15	100	400	
AM1922W	22	50	200	2000
PM1922R	22	50	200	
PM1922B	22	50	200	

Suitable for central heating systems.  
Available in white, red or blue.

## COLLET LOCKING CLIP



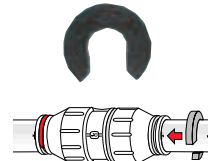
PART No.	SIZE MM	BAG QTY	BOX QTY
CM1810S Grey	10	100	2000
CM1815S Grey	15	100	1000
CM1822S Grey	22	100	1000
CM1810W White	10	100	2000
CM1815W White	15	100	1000
CM1822W White	22	100	1000
CM1810R Red	10	100	2000
CM1815R Red	15	100	1000
CM1822R Red	22	100	1000
CM1810B Blue	10	100	1000
CM1815B Blue	15	100	1000
CM1822B Blue	22	100	1000

Suitable for central heating systems.

White and grey collet clips prevent accidental release of pipe from standard fittings.

Red and blue clips provide colour coding of pipe, they should not be used to prevent accidental release of pipe.

## RELEASE AID



PART No.	SIZE MM	BAG QTY	BOX QTY
10RA	10	10	500
15RA	15	10	500
22RA	22	10	400
28RA	28	10	300

Allows a firmer grip on the collet when removing pipe.

## COLD FORMING BEND



PART No.	SIZE MM	PACK QTY	BOX QTY
10CFB	10	10	200
15CFB	15	10	30
22CFB	22	10	10

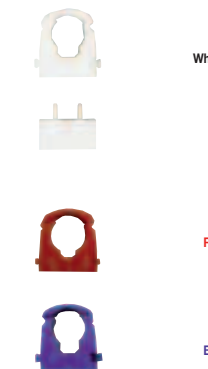
To help create a tighter bend than the minimum unsupported pipe.

## BENDING SPRINGS



PART No.	SIZE MM	PACK QTY
JG-BS10	10	5
JG-BS15	15	5
JG-BS22	22	5

## PIPE CLIPS AND SPACERS



PART No.	SIZE MM	PACK QTY	BOX QTY
White PC15W	15	50	200
White PC22W	22	50	100
White PC28W	28	20	80
White PCSW		50	400
Red PC15R	15	50	200
Red PC22R	22	50	100
Red PC28R	28	20	80
Blue PC15B	15	50	200
Blue PC22B	22	50	100
Blue PC28B	28	20	80

## RADIATOR OUTLET PLATE



PART No.	BAG QTY	BOX QTY
JG-ROP	1	25

Creates a neat outlet for 10mm supply pipes to a radiator. To be used with single gang 25mm steel KO boxes to BS 4662, fitted with rubber grommet.

## NAIL CLIP



PART No.	SIZE MM	PACK QTY	BOX QTY
NPC10	10	50	1000
NPC15	15	50	400
NPC22	22	50	250
NPC28	28	20	200

## COLLETS



For PKM Fittings

PART No.	SIZE MM	PACK QTY
PXC10	10	20
PXC15	15	20
SPF22	22	20
PXC28	28	20

For PEM Fittings

PART No.	SIZE MM	PACK QTY
PXC10	10	20
PXC15	15	20
PXC22	22	20
PXC28	28	20

## EPDM 'O' RING



PART No.	SIZE MM	PACK QTY
10 EPR	10	20
15 EPR	15	20
22 EPR	22	20
28 EPR	28	20

## THREAD WASHER

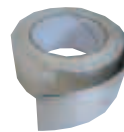


PART No.	SIZE	PACK QTY
1/2 EPW	1/2	20
3/4 EPW	3/4	20

For use with Female Coupler/ Tap Connector.

Part No. PSE3210W  
PSE3201W  
PSE3202W  
PSE3203W

## FOIL TAPE



PART No.	SIZE MM X M	PACK QTY
JGTAPE	50 x 45	8

Metallic tape to meet NHBC requirements for plastic pipe to be detected inside walls.

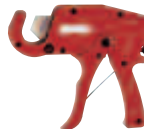
## PIPE CUTTER



For up to 22mm size pipe.

PART No.	PACK QTY	PACK QTY
JG-TS	1	30
BLADE-JGTS	2	

## HEAVY DUTY PIPE CUTTER



For up to 28mm size pipe.

PART No.	PACK QTY	BOX QTY
JGHDC	1	20
BLADEJGHDC	1	

# Speedfit® Blue

## FITTINGS FOR COLD WATER SERVICES

ABOVE AND BELOW GROUND



This new range of fittings for MDPE Pipe has an improved Collet with stainless steel teeth to provide extra grip on the pipe and has WRAS Approval. The procedure for connecting and disconnecting the fittings is similar to that for Speedfit Plumbing Fittings, as shown on page 3. However, pipe inserts must be used in every connection.

### EQUAL STRAIGHT CONNECTOR



PART No.	SIZE MM	BAG QTY	Box QTY
UG401B	20	1	100
UG402B	25	1	60
UG403B	32	1	40

Cold water only

### REDUCING STRAIGHT CONNECTOR



PART No.	SIZE MM	BAG QTY	Box QTY
UG501B	25 x 20	1	80
UG502B	32 x 25	1	50

Cold water only

### PE-COPPER COUPLER



Used to connect PE Pipe to copper or Speedfit Plumbing Pipe. Must not be buried directly into ground, soil, concrete or other substrates.

PART No.	SIZE MM	BAG QTY	Box QTY
UG601B	20 x 15	1	150
UG603B	25 x 15	1	100
UG602B	25 x 22	1	80
UG604B	32 x 28	1	60

Cold water only

### MALE ADAPTOR



PART No.	SIZE MM	QTY BAG	Box QTY
UG101B	20 x 1/2" BSP	1	150
UG102B	25 x 3/4" BSP	1	100
UG103B	32 x 1" BSPT	1	60
UG104B	32 x 1.1/2" BSPT	1	80

Cold water only

### FEMALE ADAPTOR



PART No.	SIZE MM X BSP	BAG QTY	Box QTY
UG4501B	20 x 1/2"	1	100
UG4502B	25 x 3/4"	1	100

Cold water only

### EQUAL ELBOW



PART No.	SIZE MM	BAG QTY	Box QTY
UG301B	20	1	100
UG302B	25	1	50
UG303B	32	1	30

Cold water only

### WALL PLATE ELBOW



PART No.	SIZE MM X BSP	BAG QTY	Box QTY
UGPWB2014	20 x 1/2"	1	100
UGPWB2514	25 x 1/2"	1	70
UGPWB2516	25 x 3/4"	1	70

Cold water only

### WING BACK ELBOW



PART No.	SIZE MM X BSPT	BAG QTY	Box QTY
UGPWB1514	15 x 1/2"	1	150

Cold water only

### STEM ELBOW



Stem cannot be disconnected from mating connector with collet cover fitted

PART No.	PIPE OD MM	STEM OD MM	BAG QTY	Box QTY
UG222025B	20	25	1	100
UG222525B	25	25	1	80
UG223232B	32	32	1	50

Cold water only

### EQUAL TEE



PART No.	SIZE MM	BAG QTY	Box QTY
UG201B	20	1	50
UG202B	25	1	40
UG203B	32	1	15

Cold water only

### REDUCING TEE



PART No.	SIZE ENDS	SIZE BRANCH	BAG QTY	Box QTY
UG232AB	32	25	1	15

Cold water only



## STOP END



PART NO.	SIZE MM	BAG QTY	Box Qty
UG4620B	20	1	150
UG4625B	25	1	100

Cold water only

## STOP TAP - MDPE x MDPE



PART NO.	SIZE MM	BAG QTY	Box Qty
UGSTV2020	20	1	40
UGSTV2525	25	1	30
UGSTV3232	32	1	15

Cold water only

## STOP TAP - MDPE x COPPER OR PEX



PART NO.	SIZE MM	BAG QTY	Box Qty
UGSTV2515	25 x 15	1	40
UGSTV2522	25 x 22	1	40

Cold water only

The two Stoptaps for 15 or 22mm copper or PEX Pipe must not be buried directly into ground, soil, concrete or other substrates.

## PLUGS



PART NO.	SIZE MM	BAG BOX	Box Qty
UG801E	20	1	50
UG802E	25	1	40
UG803E	32	1	30

Cold water only

## PIPE INSERT



PART NO.	SIZE MM	BAG QTY	Box Qty
UTS147 - DB	20	10	200
UTS197 - DB	25	10	150
UTS251 - DB	32	2	300

## IMPERIAL CONVERTER



Supplied with inch size Pipe Insert

PART NO.	STEM MM	IMPERIAL PIPE SIZE	BAG QTY	Box Qty
UGICO1	20	1/2"	1	100
UGICO2	25	3/4"	1	80

To convert metric size fitting for use with imperial size LDPE to BS1972 Class C or Class D. Stem cannot be disconnected from mating connector with collet cover fitted.



FOR DISPLAY STAND  
SUPPORT SEE PAGE 23



Other sales support material includes a Counter Mat and an attractive brochure

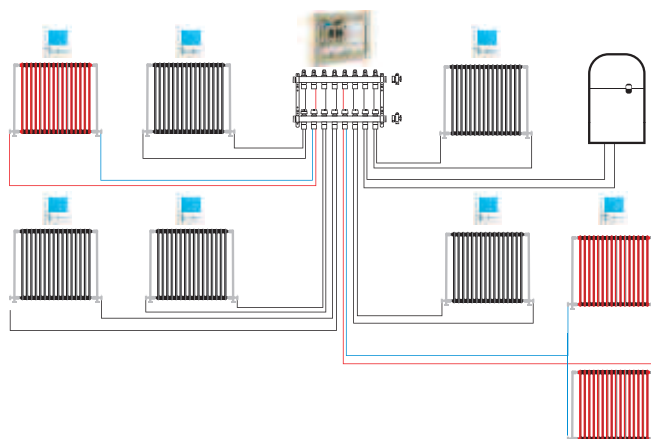
## ENERGY SAVER PLUS

*The Economic Way to Heat Your Home*

Unlike a conventional system, where radiators are connected to a common flow and return, this manifold system enables each radiator to have its own hot water supply. For ease of plumbing, the hot water can also be coupled to the manifold. Energy saving electrical controls are used to set time and temperature for each room.

**Note: Energy Saver Plus can also be controlled using Network Control Products shown opposite.**

For further information see our Underfloor Heating Brochure.



### MANIFOLD - STAINLESS STEEL

NEW



PART No.	DESCRIPTION	PACK QTY
JGUFHMAN4/2	4 Zone	1
JGUFHMAN6/2	6 Zone	1
JGUFHMAN8/2	8 Zone	1
JGUFHMAN10/2	10 Zone	1
JGUFHMAN12/2	12 Zone	1

The manifolds are complete with adjustable flow gauge, drain valve and air bleed valve. They are pre-assembled on wall brackets and supplied with screws and plugs. Also supplied with 'STS' Pipe Inserts and Collet Clips.

### ACTUATOR VALVE

NEW



PART No.	DESCRIPTION	PACK QTY
JGUFHA(240 v)/2	240 v Circuit Actuator Valve	1

### TOUCHSCREEN TIME CLOCK - 4 CHANNEL



PART No.	DESCRIPTION	PACK QTY
JGTM4	Touchscreen Time Clock 4 Channel	1

### WIRING CENTRE - 8 ZONE



PART No.	DESCRIPTION	PACK QTY
JGUH3	Wiring Centre 8 Zone	1

### PROGRAMMABLE ROOM THERMOSTATS



PART No.	DESCRIPTION	PACK QTY
JGPRTE	Programmable Room Thermostat	1
JGPRTHW	Programmable Room Thermostat Plus Hot Water Control	1

### DIAL SET BACK ROOM THERMOSTAT



PART No.	DESCRIPTION	PACK QTY
JGDSSB	Dial Setback Room Thermostat	1

### SPEEDPEX BARRIER PIPE



PART No.	SIZE MM X M	PACK QTY	Box QTY
10BPEX-50C	10 X 50	1	10
10BPEX-100C	10 X 100	1	6
15BPEX-50C	15 X 50	1	5
15BPEX-100C	15 X 100	1	5
15BPEX-120C	15 X 120	1	5
15BPEX-150C	15 X 150	1	4

### POLYBUTYLENE BARRIER PIPE



PART No.	SIZE MM X M	PACK QTY	Box QTY
15BPB-50C	15 X 50	1	5
15BPB-100C	15 X 100	1	5
15BPB-120C	15 X 120	1	5
15BPB-150C	15 X 150	1	4
15BPB-300C	15 X 300	1	

## LOW VOLTAGE UNDERFLOOR HEATING NETWORK CONTROL SYSTEM

The New Underfloor Heating Network Control System has electrical components 'networked' together using computer network cable. The basic system of Programmable Room Thermostats and Wiring Centre can be enhanced by a number of upgrade options.

- Range of de lux Touch Screen Programmable Room Thermostats.
- Central control of the whole system from a Touchpad controller.
- Software options to give direct control from a PC, via the internet or from a mobile phone.

For further information see our Underfloor Heating Brochure



### PROGRAMMABLE ROOM THERMOSTATS



PART No.	DESCRIPTION	PACK QTY
JGSTAT/V3	Programmable Room Thermostat	1
JGSTATPLUS/V3	Programmable Room Thermostat Plus Hot Water Control	1

### TEMPERATURE SENSOR PROBE



PART No.	DESCRIPTION	PACK QTY
JGPROBE	Non Electrical Probe	1
JGSENSOR	Sensor Box For Above	1

### WIRING CENTRE



PART No.	DESCRIPTION	PACK QTY
JGUH1	8 Zone Wiring Centre	1

### TOUCHPAD NETWORK CONTROLLER



PART No.	DESCRIPTION	PACK QTY
JGTOUCHPAD/TFT	Touchpad Controller	1

### TOUCHSCREEN PROGRAMMABLE ROOM THERMOSTATS



PART No.	DESCRIPTION	PACK QTY
JGSTAT/TS/V3	Touchscreen Programmable Room Thermostat	1
JGSTATPLUS/TS/V3	Touchscreen Programmable Room Thermostat Plus Hot Water Control	1

### TOUCHSCREEN TWIN CHANNEL PROGRAMMABLE ROOM THERMOSTAT



PART No.	DESCRIPTION	PACK QTY
JGSTAT2/TS/V3	Touchscreen Twin Channel Programmable Room Thermostat	1

Allows one thermostat to control two zones

### NET MONITOR



PART No.	DESCRIPTION	PACK QTY
JGNETMON1	Net Monitor	1
JGNETMON2	Net Monitor With GSM	1

### NETWORK SOFTWARE



PART No.	DESCRIPTION	PACK QTY
JGPCLITE	Network Software	1
JGPCPRO	Network Software Controls Up To 900 Zones	1

### NETWORK ADAPTORS



PART No.	DESCRIPTION	PACK QTY
JGUSB	USB Adaptor	1
JGNETADAP1	Ethernet Adaptor 32 Zone	1
JGNETADAP2	Ethernet Adaptor 64 Zone	1

## MAINS VOLTAGE CONTROLS

### NEW RANGE

- Easy to use
- Easy to install
- Attractive slimline components

Easy to use and install the new mains voltage components offer simple effective control of up to 8 zones.

The JGUH3 Wiring Centre is the hub of the system. It works either in conjunction with the Touch Screen Time Clock and simple to use Dial Set Back Thermostat, or, alternatively with the Programmable Room Thermostats. There is also the ability to use both types of thermostats in the same system.

### TOUCHSCREEN TIME CLOCK - 4 CHANNEL



PART No.	DESCRIPTION	PACK QTY
JGTM4	Touchscreen Time Clock 4 Channel	1

### WIRING CENTRE - 8 ZONE



PART No.	DESCRIPTION	PACK QTY
JGUH3	Wiring Centre 8 Zone	1

### PROGRAMMABLE ROOM THERMOSTATS



PART No.	DESCRIPTION	PACK QTY
JGPRTE	Programmable Room Thermostat	1
JGPRTHW	Programmable Room Thermostat Plus Hot Water Control	1

### DIAL SET BACK ROOM THERMOSTAT



PART No.	DESCRIPTION	PACK QTY
JGDSSB	Dial Setback Room Thermostat	1

### ACTUATOR VALVE

NEW



PART No.	DESCRIPTION	PACK QTY
JGUFHA(240 v)/2	240 v Circuit Actuator Valve	1

## UNDERFLOOR HEATING FOR CONSERVATORIES AND EXTENSIONS

The Speedfit Underfloor Heating Control Unit is the ideal way to provide heating to a conservatory or room extension up to 30sqm.

The unit is pre-assembled and pre-wired to allow for a fast and simple installation. It can be plugged into any convenient electrical socket or spur.

### CONTROL UNIT



PART No.	DESCRIPTION	PACK QTY
JGROOMPACK	Single Room Control Unit	1

For conservatories or room extensions up to 30sq metres.

### SINGLE ROOM UNDERFLOOR HEATING PACK



PART No.	DESCRIPTION	PACK QTY
JGUFHPACK20	Underfloor Heating Pack	1

For conservatories or room extensions up to 20sq metres.

Pack contains:

- 1 x 15mm x 150m Coil Pipe
- 1 x Single Room Control Unit
- 1 x Programmable Room Thermostat
- 200 x 15mm Pipe Clips
- 2 x 15mm Pipe Inserts



PART No.	DESCRIPTION	PACK QTY
JGUFHPACK30	Underfloor Heating Pack	1

For conservatories or room extensions up to 30sq metres.

Pack contains:

- 2 x 15mm x 100m Coils of Pipe
- 1 x Single Room Control Unit
- 1 x Programmable Room Thermostat
- 300 x 15mm Pipe Clips
- 8 x 15mm Pipe Inserts
- 2 x 15mm Speedfit Equal Tees
- 2 x 15mm Speedfit Stem Elbows

## WIRELESS CONTROLS NEW

### NEW RANGE

- Easy to use
- Easy to install
- Wireless Range up to 100m

The new Wireless Control System permits flexible location of thermostats in domestic heating installations.

The programmable thermostats work in conjunction with the Wireless 8 Zone Wiring Centre, which is mains powered and is ideally suited to warm water underfloor heating as well as radiator installations. To extend the Wireless range, wireless repeaters are available to 'boost' the signal.

### WIRELESS MULTI MODE THERMOSTAT



PART No.	DESCRIPTION	PACK QTY
JGWPRT	Wireless Multi Mode Thermostat	1
JGWPRTHW	Wireless Multi Mode Thermostat Plus Hot Water Control	1

### WIRELESS RECEIVER - 2 ZONE



PART No.	DESCRIPTION	PACK QTY
JGWRC	Wireless Receiver 2 Zone	1

### WIRELESS REPEATER



PART No.	DESCRIPTION	PACK QTY
JGBOOSTER	Wireless Repeater	1

### WIRELESS WIRING CENTRE - 8 ZONE



PART No.	DESCRIPTION	PACK QTY
JGWWC	Wireless Wiring Centre 8 Zone	1

### EXTERNAL AERIAL



PART No.	DESCRIPTION	PACK QTY
JGAERIAL	External Aerial For Use With 8 Zone Wireless Wiring Centre JGWWC	1

## MANIFOLDS AND FIXING SYSTEMS

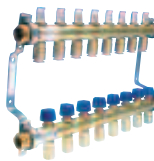
### MANIFOLD - STAINLESS STEEL



PART No.	DESCRIPTION	PACK QTY
JGUFHMAN4/2	4 Zone	1
JGUFHMAN6/2	6 Zone	1
JGUFHMAN8/2	8 Zone	1
JGUFHMAN10/2	10 Zone	1
JGUFHMAN12/2	12 Zone	1

The manifolds are complete with adjustable flow gauge, drain valve and air bleed valve. They are pre-assembled on wall brackets and supplied with screws and plugs. Also supplied with 'STS' Pipe Inserts and Collet Clips.

### MANIFOLD - BRASS



PART No.	DESCRIPTION	PACK QTY
JGUFHMAN4	4 Zone	1
JGUFHMAN6	6 Zone	1
JGUFHMAN8	8 Zone	1
JGUFHMAN10	10 Zone	1
JGUFHMAN12	12 Zone	1

The manifolds are complete with adjustable flow gauge, drain valve and air bleed valve. They are pre-assembled on wall brackets and supplied with screws and plugs. Also supplied with 'STS' Pipe Inserts and Collet Clips.

### CONTROL PACK - NICKEL PLATED



PART No.	DESCRIPTION	PACK QTY
JGCONTROL/2	CONTROL PACK	1



### MANIFOLD EXTENSION KIT - STAINLESS STEEL



PART No.	DESCRIPTION	PACK QTY
JGUFHMANEXT/2	Manifold Extension Kit	1



### MANIFOLD ELBOW CONNECTOR - NICKEL PLATED



PART No.	DESCRIPTION	PACK QTY
JGUFHMANELB/2	Manifold Elbow Connector	1

### MANIFOLD EXTENSION KIT - BRASS



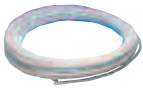
PART No.	DESCRIPTION	PACK QTY
JGUFHMANEXT	Manifold Extension Kit	1

### MANIFOLD ELBOW CONNECTOR - BRASS



PART No.	DESCRIPTION	PACK QTY
JGUFHMANELB	Manifold Elbow Connector	1

## SPEEDPEX BARRIER PIPE



PART No.	SIZE MM x M	PACK QTY	BOX QTY
15BPEX-50C	15 X 50	1	5
15BPEX-100C	15 X 100	1	5
15BPEX-120C	15 X 120	1	5
15BPEX-150C	15 X 150	1	4

## POLYBUTYLENE BARRIER PIPE



**MORE FLEXIBLE**

PART No.	SIZE MM x M	PACK QTY	BOX QTY
15BPB-50C	15 X 50	1	5
15BPB-100C	15 X 100	1	5
15BPB-120C	15 X 120	1	5
15BPB-150C	15 X 150	1	4
15BPB-300C	15 X 300	1	

## SPREADER PLATES



PART No.	SIZE MM x MM	PACK QTY
JGUFHSP400	390 x 1000	10
JGUFHSP250	390 x 250	10
JGUFHSP165	FOR I BEAM JOISTS 165 x 1000	20

Available in Pack Multiples only.

## PIPE STAPLES



PART No.	DESCRIPTION	SIZE	PACK QTY
JGUFHSTAPLE	Pipe Staples	60mm	300
JGUFHSTAPLE40	Pipe Staples	40mm	300

## STAPLE GUN



PART No.	DESCRIPTION	PACK QTY
JGUFHGUN	Staple Gun	1

## MOUNTING RAIL



PART No.	DESCRIPTION	PACK QTY
JGUFHRAIL	2 Metre Long	16
JGUFHPIN	Rail Pins For Above	100

Available in Pack Multiples only.

## FLOOR CLIPS



PART No.	DESCRIPTION	PACK QTY
JGUFHCLIP	Floor Clip	100

Available in Pack Multiples only.

## FIXING TOOL



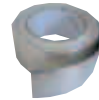
PART No.	DESCRIPTION	PACK QTY
JGUFHTOOL	For Easy Fixing Of Floor Clips	1

## CONDUIT ELBOW



PART No.	DESCRIPTION	PACK QTY
JGUFHCONELB	Conduit Elbow	50

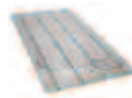
## EDGE STRIP



PART No.	DESCRIPTION	PACK QTY
JGUFHEDGE	25 Metre Roll	1

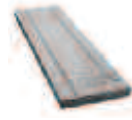
## OVERLAY BOARDS

**NEW**



PART No.	DESCRIPTION MM x MM	PACK QTY
JGUFHBOARD1	Overlay Board 1250 x 600	10

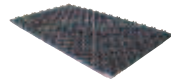
Used to install underfloor heating pipe over an existing floor structure.



PART No.	DESCRIPTION MM x MM	PACK QTY
JGUFHBOARD2	Overlay Board 1200 x 350	10

Used to install underfloor heating pipe between existing joists.

## FLOOR PANELS



PART No.	DESCRIPTION MM x MM	PACK QTY
JGUFHTILE	Floor Tile 1400 x 800	12

Supplied in packs of 12, Speedfit Floor Tiles have an 11mm layer of insulation for support and additional thermal insulation.

## UNDERFLOOR HEATING SPARE PARTS

PART No.	DESCRIPTION	PACK QTY
SPUFH1-H	Mixing Valve Unit	1
SPUFH2	Pump Pack Flow Temp Gauge	1
SPUFH3	Over Heat Stat	1
SPUFH4	Manifold Flowmeter	1
SPUFH5	Manifold Balancing Valve	1
SPUFH6	Dust Cap For Balancing Valve	1

# MERCHANDISING

## WHITE FITTING DISPLAY STAND



PART No.	SIZE	QTY
JG-STAND/C	6' x 3'	1

Each stand will include :-  
 25 Product Range Guides  
 Plus the following fittings

Stand	PRODUCT	SIZE MM	QTY
C	Straight	15	120
	Straight	22	60
	Elbow	15	100
	Elbow	22	50
	Tee	15	80
	Tee	22	30
	Stop End	15	80
	Stop End	22	30
	Female Connector	15 x 1/2	60
	Female Connector	22 x 3/4	25
	Tap Connector	15 x 1/2	30
	Tap Connector	22 x 3/4	25
	Service Valve	15	30
	Reducer	22 x 15	30
	Reducing Tee	22 x 22 x 15	15
	Washing Machine Tap	15 x 3/4	20
	Pipe Insert	15	500
	Pipe Insert	22	250

## GREY FITTING DISPLAY STAND



PART No.	SIZE	QTY
JG-STAND/DG	6' x 3'	1

Each stand will include :-  
 25 Product Range Guides  
 Plus the following fittings

PRODUCT	SIZE MM	QTY
Straight	15	60
Straight	22	30
Elbow	15	50
Elbow	22	25
Tee	15	40
Tee	22	15
Tap Connector	15 x 1/2	50
Tap Connector	22 x 3/4	40
Bent Connector	15 x 1/2	50
Reducer	22 x 3/4	70
Pipe Insert	15	500
Pipe Insert	22	250

## WHITE FLEXI HOSE DISPLAY STAND

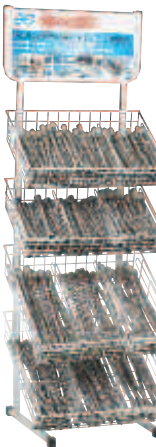


PART No.	SIZE	QTY
JG-STAND/WFLEXI	6' x 3'	1

The stand will include:

SIZE	QTY
300mm 15mm x 1/2"	26
15mm x 3/4"	26
22mm x 3/4"	26
15mm x 1/2" Service Valve with handle	26
22mm x 3/4" Service Valve with handle	10
15mm x 1/2" Elbow Pattern	26
15mm x 15mm	26
15mm x M10 Pack	6
15mm x M12 Pack	6
500mm 15mm x 1/2"	20
22mm x 3/4"	10
15mm x 3/4"	20

## BRAIDED FLEXI HOSE DISPLAY STAND



PART No.	SIZE	QTY
JG-STAND/FLEXI	6' x 3'	1

The stand will include:

SIZE	QTY
300mm 15mm x 1/2"	26
15mm x 3/4"	26
22mm x 3/4"	26
15mm x 15mm	26
15mm x 1/2" With Service Valve	20
15mm x M10 Packs	6
15mm x M12 Packs	6
500mm 15mm x 1/2"	20
15mm x 3/4"	20
22mm x 3/4"	10
15mm x 15mm	20
22mm x 22mm	10
15mm x 1/2" With Service Valve	10

## MERCHANDISING

### PRE PACKED FITTING DISPLAY STAND



PART No.	SIZE	QTY
JG-Stand/P	6' x 2'	1

The Stand will include:

PRODUCT	SIZE	QTY
Straight Connector	15	10
Straight Connector	22	10
Elbow	15	10
Elbow	22	10
Tee	15	10
Tee	22	10
Female Coupler/Tap Connector	15 x 1/2"	20
Female Coupler/Tap Connector	22 x 3/4"	20
Stop End	15	20
Stop End	22	20
Reducer	22 x 15	10
White Flexi Hose	15 x 1/2"	20
White Flexi Hose	22 x 3/4"	20
Washing machine Tap	15 x 3/4"	10
Service Valve	15	10
Pipe Insert	15	50
Pipe Insert	22	50
Pipe Cutter	-	1

Pipe not included.

### BLUE SPEEDFIT FITTINGS FOR MDPE STAND



PART No.	SIZE MM	PACK QTY
JG-Stand/UG2	6' x 2'	1

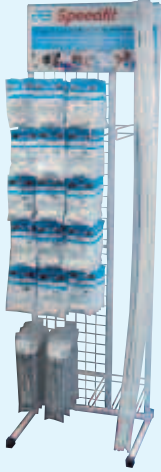
Each stand will include :-  
Header Board  
Product Guides

PRODUCT	SIZE MM	QTY
Equal Straight Connector	20	6
Equal Straight Connector	25	6
Reducing Straight Connector	25 x 20	6
PE-Copper Coupler	20 x 15	6
PE-Copper Coupler	25 x 15	6
PE-Copper Coupler	25 x 22	6
PE-Copper Coupler	32 x 28	6
Equal Elbow	20	6
Equal Elbow	25	6
Equal Tee	20	6
Equal Tee	25	6
Stop End	20	6
Stop End	25	6
Wall Plate Elbow	20 x 1/2" BSP	6
Wall Plate Elbow	25 x 1/2" BSP	6
Stop Tap	25 x 15	4
Stop Tap	25 x 22	4
Stop Tap	25 x 25	4
Pipe Insert	20	60
Pipe Insert	25	60
Imperial Converter	20 x 1/2"	6
Imperial Converter	25 x 3/4"	6



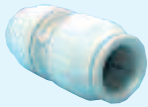
## PRE PACKED PRODUCTS

Products packed in a bag with instructions



FOR MERCHANDISING SUPPORT  
SEE PAGE 23

### EQUAL STRAIGHT CONNECTOR



PART No.	SIZE MM	BAG QTY	BOX QTY
PEM0410WP	10	1	40
PEM0415WP	15	1	250
PEM0422WP	22	1	150
PEM0428WP	28	1	75

Suitable for central heating systems.

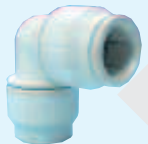
### REDUCING STRAIGHT COUPLER



PART No.	SIZE MM	BAG QTY	BOX QTY
PEM201510WP	15 x 10	1	250
PEM202215WP	22 x 15	1	200

Suitable for central heating systems.

### EQUAL ELBOW

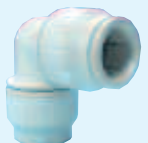


PART No.	SIZE MM	BAG QTY	BOX QTY
PEM0310WP	10	1	400
PEM0315WP	15	1	250
PEM0322WP	22	1	150
PEM0328WP	28	1	75

Suitable for central heating systems.

### REDUCING ELBOW

**NEW**



PART No.	SIZE MM	BAG QTY	BOX QTY
PEM212215WP	22 x 15	1	

Suitable for central heating systems.

### STEM ELBOW



Provides a swivel type connection.

PART No.	PIPE	STEM	BAG QTY	BOX QTY
PEM221010WP	10	10	1	400
PEM221015WP	10	15	1	
PEM221515WP	15	15	1	250
PEM222222WP	22	22	1	200

Suitable for central heating systems.

Please note a Collet Cover cannot be used on a Speedfit end assembled with the stem of a 22mm Stem Elbow.

### EQUAL TEE



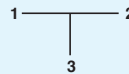
PART No.	SIZE MM	BAG QTY	BOX QTY
PEM0210WP	10	1	300
PEM0215WP	15	1	200
PEM0222WP	22	1	100
PEM0228WP	28	1	50

Suitable for central heating systems.

### REDUCING TEE



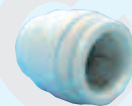
Sizes listed as follows.



PART No.	SIZE MM	BAG QTY	BOX QTY
PEM3015BWP	15x10x10	1	250
PEM3015AWP	15x15x10	1	200
PEM3022CWP	15x15x22	1	100
PEM3022BWP	22x15x15	1	100
PEM3022DWP	22x15x22	1	100
PEM302210AWP	22x22x10	1	150
PEM3022AWP	22x22x15	1	100
PEM3028BWP	28x22x22	1	75
PEM302815AWP	28x28x15	1	50
PEM3028AWP	28x28x22	1	50
PEM3028DWP	28x22x28	1	50

Suitable for central heating systems.

### STOP END



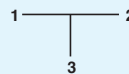
PART No.	SIZE MM	BAG QTY	BOX QTY
PSE4610WP	10	1	500
PSE4615WP	15	2	600
PSE4622WP	22	2	400
PSE4628WP	28	1	

Suitable for central heating systems.

### STEM TEE



Sizes listed as follows.



PART No.	SIZE MM	BAG QTY	BOX QTY
PEM532210WP	22x22x10	1	150
PEM532215WP	22x22x15	1	150

Suitable for central heating systems.

### FEMALE COUPLER - TAP CONNECTOR



Requires hand tightening only.

PART No.	SIZE MM x BSP	BAG QTY	BOX QTY
PSE3210WP	10 x 1/2"	2	600
PSE3201WP	15 x 1/2"	2	400
PSE3203WP	15 x 3/4"	2	400
PSE3202WP	22 x 3/4"	2	200

Suitable for central heating systems.

Note: Plastic threads are not as strong as metal threads. For torque figures see Technical Checklist.

### STRAIGHT TAP CONNECTOR



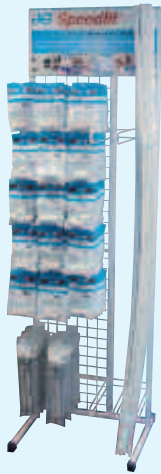
PART No.	SIZE MM x BSP	BAG QTY	BOX QTY
PEMSTC1014P	10 x 1/2"	1	300
PEMSTC1514P	15 x 1/2"	1	200
PEMSTC1516P	15 x 3/4"	1	200
PEMSTC2216P	22 x 3/4"	1	200

Suitable for central heating systems.

With brass swivel nut and sealing washer. For torque figures see Technical Checklist.

## PRE PACKED PRODUCTS CONTINUED

Products packed in a bag with instructions



FOR MERCHANDISING SUPPORT  
SEE PAGE 23

### BENT TAP CONNECTOR



PART No.	SIZE MM X BSP	BAG QTY	Box QTY
PEMBTC1014P	10 x 1/2"	1	300
PEMBTC1514P	15 x 1/2"	1	200

Suitable for central heating systems.  
With brass swivel nut and sealing washer.  
For torque figures see Technical Checklist.

### PIPE REPAIR KIT



PART No.	SIZE MM	BAG QTY	Box QTY
15RKP	15	1	80
22RKP	22	1	50

Suitable for central heating systems.

Provides a simple way of repair on a rigid pipe run.  
Remove a damaged section of pipe and replace with a repair kit

### SLIP TEE CONNECTOR



PART No.	SIZE MM	BAG QTY	Box QTY
15TKP	15	1	80
22TKP	22	1	40

Suitable for central heating systems.

Provides a simple way to break into an existing pipe run

### REDUCER



PART No.	SIZE MM	BAG QTY	Box QTY
PEM061510WP	15 x 10	1	400
PEM062215WP	22 x 15	1	250
PEM062815WP	28 x 15	1	200
PEM062822WP	28 x 22	1	150

Suitable for central heating systems.

### TANK CONNECTOR



PART No.	SIZE MM	BAG QTY	Box QTY
CM0715SP	15	1	200
CM0722SP	22	1	100

Suitable for cold water tanks only.

Requires hand tightening only.

Maximum wall thickness of tank = 4mm.

### 4 WAY MANIFOLD



PART No.	SIZE MM	BAG QTY	Box QTY
SFM512210EP	22 x 10	1	150

Suitable for central heating systems.

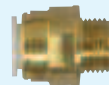
### 4 PORT RAIL MANIFOLD



PART No.	SIZE MM	BAG QTY	Box QTY
SFM522210EP	22 x 10	1	50
SFM522215EP	22 x 15	1	40

Suitable for central heating systems.

### BRASS MALE COUPLER



PART No.	SIZE MM X BSP	BAG QTY	Box QTY
15MC (1/2) P	15mm x 1/2"	1	50
22MC (3/4) P	22mm x 3/4"	1	50

Suitable for central heating systems.

Manufactured in DZR Brass.

### BRASS BACK PLATE ELBOW



PART No.	SIZE MM X BSP	BAG QTY	Box QTY
15WBP	15 x 1/2"	1	25

Suitable for central heating systems.

Manufactured in DZR Brass.

### BRASS MALE CYLINDER ADAPTOR

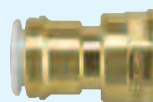


PART No.	SIZE MM X BSP	BAG QTY	Box QTY
22CMAP	22 x 1"	1	40

Suitable for central heating systems.

Manufactured in DZR Brass.

### BRASS FEMALE CYLINDER ADAPTOR



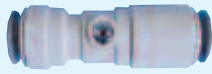
PART No.	SIZE MM X BSP	BAG QTY	Box QTY
22CFAP	22 x 1"	1	30

Suitable for central heating systems.

Manufactured in DZR Brass.

## PRE PACKED VALVES

### PLASTIC SERVICE VALVE



PART No.	SIZE MM	BAG QTY	Box QTY
15SVP	15	1	200
22SVP	22	1	150

Not suitable for central heating systems.  
Hot and Cold water only, 65°C maximum.

### PLASTIC SERVICE VALVE WITH TAP CONNECTOR



PART No.	SIZE MM X BSP	BAG QTY	Box QTY
Grey 15SVSTCP	15 x 1/2"	1	200



White 15SVSTC-WP	15 x 1/2	1	200
------------------	----------	---	-----

Not suitable for central heating systems.  
Hot and Cold water only, 65°C maximum.

### PLASTIC ANGLE SERVICE VALVE WITH TAP CONNECTOR



PART No.	SIZE MM X BSP	BAG QTY	Box QTY
Grey 15SVBTCP	15 x 1/2"	1	200



White 15SVBTC-WP	15 x 1/2"	1	200
------------------	-----------	---	-----

Not suitable for central heating systems.  
Hot and Cold water only, 65°C maximum.

### STOP VALVE



PART No.	SIZE MM	BAG QTY	Box QTY
15STVP	15	1	100
22STVP	22	1	50

Not suitable for central heating systems.  
Hot and Cold water only, 65°C maximum.

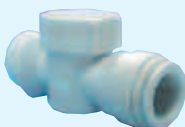
### BRASS STOP VALVE



PART No.	SIZE MM	BAG QTY	Box QTY
15BSCP	15	1	10

Only suitable for central heating systems.  
Manufactured in DZR Brass.

### WASHING MACHINE TAP



PART No.	SIZE MM X BSP	BAG QTY	Box QTY
15APTP	15 x 3/4"	1	200

Not suitable for central heating systems.  
Hot and Cold water only, 65°C maximum.  
For maximum torque figures on plastic thread, please see Technical Checklist.

### APPLIANCE TEE



PART No.	SIZE MM X BSP	BAG QTY	Box QTY
15 APT2P	15 x 3/4"	1	150

Not suitable for central heating systems.  
Hot and Cold water only, 65°C maximum.  
For maximum torque figures on plastic thread, please see Technical Checklist.

### EMERGENCY SHUT OFF TAP



PART No.	SIZE MM	BAG QTY	Box QTY
15 ESOTP	15	1	200

Not suitable for central heating systems.  
Hot and Cold water only, 65°C maximum.

### BRASS CHROME PLATED SERVICE VALVE



PART No.	SIZE MM	BAG QTY	Box QTY
10HSVP	10	1	50
15HSVP	15	1	50
22HSVP	22	1	20

Suitable for central heating systems.

### BRASS CHROME PLATED SERVICE VALVE WITH TAP CONNECTOR



PART No.	SIZE MM X BSP	BAG QTY	Box QTY
15PTSVP	15 x 1/2"	1	50
22PTSVP	22 x 3/4"	1	20

Suitable for central heating systems.

### BRASS CHROME PLATED BALL VALVE



PART No.	SIZE MM	BAG QTY	Box QTY
15BVP	15	1	40
22BVP	22	1	20

Suitable for central heating systems.  
Each valve has a red and a blue indice.

### BRASS DRAIN COCK



PART No.	SIZE MM	BAG QTY	Box QTY
15BDCP	15	1	50

Suitable for central heating systems.  
Manufactured in DZR Brass.  
Speedfit Drain Cocks cannot be used where collet covers are fitted.  
They can be used with a standard fitting fitted with a collet clip.

### DOUBLE CHECK VALVE



PART No.	SIZE MM	BAG QTY	Box QTY
15DCVP	15	1	200

Not suitable for central heating systems.  
Hot and Cold water only, 65°C maximum.

**1/4 Turn Valves.** These valves have been designed to allow temporary servicing of downstream equipment and must only be used in the fully open or fully closed position.

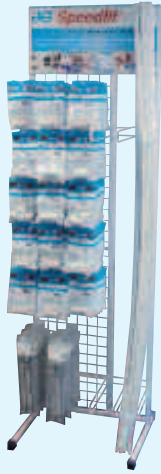
Do Not use these Valves:

- In a partially open position to control flow.
- To provide a permanent termination.
- Without tubing assembled or plugged (or threaded connections sealed).
- As a tap or "faucet".

1/4 Turn Valves are indicated by this marker '•'

## PRE PACKED PRODUCTS CONTINUED

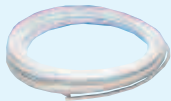
Products packed in a bag with instructions



FOR MERCHANDISING SUPPORT  
SEE PAGE 23

## PRE PACKED PIPE & PIPE ACCESSORIES

### SPEEDPEX BARRIER PIPE

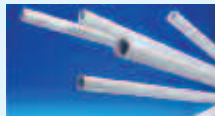


British Gas accepted for water pipe in vented and sealed central heating systems.

PART No.	SIZE MM x M	PACK QTY	BOX QTY
10BPEX-25C	10 x 25	1	20
15BPEX-25C	15 x 25	1	8
15BPEX-50C	15 x 50	1	5
22BPEX-25C	22 x 25	1	8
22BPEX-50C	22 x 50	1	5

Suitable for central heating systems.

### SPEEDPEX BARRIER PIPE



Straight lengths.  
15 & 22mm in packs of 20.  
28mm in packs of 10.

PART No.	SIZE MM x M	PACK QTY
15BPEX-20x2L	15 x 2	20
15BPEX-20x3L	15 x 3	20
22BPEX-20x2L	22 x 2	20
22BPEX-20x3L	22 x 3	20
28BPEX-10x3L	28 x 3	10

Suitable for central heating systems.

### PIPE INSERT



To be used when connecting Speedfit Pipe to a Speedfit fitting or a compression fitting.

PART No.	SIZE MM	BAG QTY	BOX QTY
TSM10NP	10	10	5000
TSM15NP	15	10	3000
TSM22NP	22	5	1000
TSM28NP	28	5	500

Suitable for central heating systems.

### SUPERSEAL PIPE INSERT



To be used with Speedfit Pipe and Speedfit fittings, to give enhanced sealing.

PART No.	SIZE MM	BAG QTY	BOX QTY
STS10 P	10	10	5000
STS15 P	15	10	3000
STS22 P	22	5	1000

Suitable for central heating systems.

See page 3 for details.

### NAIL CLIP



PART No.	SIZE MM	BAG QTY	BOX QTY
NPC10P	10	20	5000
NPC15P	15	20	2000
NPC22P	22	10	1000

### PIPE CUTTER



PART No.	PACK QTY	BOX QTY
JG-TS	1	30

For up to 22mm size pipe.

# TECHNICAL CHECKLIST - PLUMBING AND HEATING FITTINGS

## Fittings and pipe should be kept clean and undamaged before use.

- **Sizes.** 10mm to 28mm diameter.
- **Pipes.** Speedfit fittings can be used with:
  - Copper pipe to BS EN 1057
  - Speedfit Barrier Pipe to BS7291

Speedfit fittings cannot be used on stainless steel pipe

- **Standards.** Speedfit products are designed and manufactured under a fully integrated system assessed by B.S.I. to BS EN ISO9001. They are approved by the Water Regulations Advisory Scheme and BBA. Speedfit 'PEM', 'PSE' and 'SFM' Fittings and Speedfit Barrier Pipe are Kitemarked to BS7291 Parts 1, 2 and 3 Class S (Licence No. KM39767).

- **Applications**
  - Mains fed and indirect cold water systems
  - Vented and unvented hot water systems
  - Vented and sealed central heating systems

- **DO NOT USE FOR Gas, fuel oil or compressed air applications.**

- **Working Temperatures and Pressures.**

Application	Usual working temperature, °C	Maximum working temperature, °C	Maximum working pressure, bar
<b>Cold Water</b> (indirect and direct mains)	20	20	12
<b>Central Heating</b>	82	105, short term malfunction at 114	3
<b>Hot Water</b> (including unvented cylinders)	65	95	6

- **Burst Pressure (fittings).** With copper or plastic pipe at 20°C: Speedfit fittings used with copper or Speedfit Barrier Pipe will withstand pressures well in excess of normal service conditions.
- **High Temperatures.** Can withstand 114°C intermittently for short periods. The Speedfit system should not be used on an uncontrolled heat source.
- **Insulation.** Should comply with BS6700 and BS5422, as for copper.
- **Minimum Bend Radii (BPEX)**

Pipe Diameter	10mm	15mm	22mm	28mm
Min radius with clips	100mm	175mm	225mm	300mm
Min radius with cold forming bend	30mm	75mm	110mm	

- **Clip Spacing (in mm) For Surface Mounted Pipes**

Pipe Diameter	Clip Spacing	
	Horizontal Run	Vertical Run
10-15mm	300mm	500mm
22mm	500mm	800mm
28mm	800mm	1,000mm

Where pipe is concealed, clipping may only be required where necessary.

- **Expansion (PEX pipe).** 1% on length between 20°C and 82°C.
- **Flow Rates.** Comparable with metal systems.
- **Cleaners, Inhibitors and Descalants.** For advice on the replenishment of additives such as corrosion inhibitors, the following manufacturers should be contacted: Fernox Manufacturing Limited on 01799 550811 or Sentinel, BetzDearborn Limited on 0151 420 9595.
- **Paint and Chemicals.** Use only water or oil based paint. Collet covers prevent paint ingress into fittings. **DO NOT ALLOW CONTACT WITH** oil based jointing compounds, cellulose based paints, paint thinners or strippers, solder flux or acid based descalants or aggressive cleaning products.
- **Solder Flux.** No fluxes of any types should come into contact with JG Speedfit Pipe and Fittings. If fluxes are to be used in an environment where Speedfit is installed, then (1) extreme care should be taken to ensure that no such contact takes place and (2) JG recommend installers only use fluxes tested and approved in writing in advance by JG. At the date of this publication, the only such approved flux is Fernox Flux.
- **Chlorine.** Speedfit is not suitable for use in systems where the water contains high levels of chlorine. e.g. swimming pools, fountains etc.
- **Exposure to Sunlight.** Speedfit products, when used indoors, are not affected by sunlight. When used outdoors protect from ultra violet light by lagging or painting.
- **Pipe Clips.** Pipe clips should not be fitted any closer than 60mm from the end of the fitting. Pipe should be adequately supported by pipe clips to prevent undue stress (side load) on fittings.
- **Pipe Inserts.** Must be used on all installations when using plastic pipe and should be fully inserted. Only use a Speedfit Insert with Speedfit Pipe.
- **Metal Joists.** When 'cabling' plastic pipe through metal joists ensure rubber grommets are in place to prevent damage to pipe. Use of collet covers or collet clips on fittings recommended.
- **Connection to Boilers.** A minimum 1 metre run of copper pipe must be installed between the boiler and the Speedfit system, as per BS5955: Part 8.

- **Connection to Copper Pipe.** 450mm is the minimum distance to make a solder connection on copper pipe inserted into a Speedfit Fitting. Ensure that any residual flux and solder does not come into contact with the fitting.
- **Concrete and Masonry.** Speedfit pipe and fittings can be laid in concrete and masonry providing they are installed in conduit pipe with access boxes for the fittings. This is to enable the pipe to expand and to provide accessibility for both pipe and fitting. As stated in Water Regulation Schedule 2.7 and BS8000: Part 15, fittings and pipe should be removable for possible replacement. Insulation is also recommended to protect against heat loss and the effects of frost.
- **Electrical Continuity.** If Speedfit is used in an existing metal system which may have been used for earthing, electrical continuity should be reinstated.
- **Valves and Taps.** Plastic 15mm and 22mm valves and taps available from JG Speedfit Ltd are not suitable for central heating installations.
- **1/4 Turn Valves.** These valves have been designed to allow temporary servicing of downstream equipment and must only be used in the fully open or fully closed position.

### Do Not use these Valves:

- In a partially open position to control flow.
- To provide a permanent termination.
- Without tubing assembled or plugged (or threaded connections sealed).
- As a tap or "faucet".

- **Collet Covers.** Collet covers provide added security against pipe disconnection, e.g. the fittings coming into contact with rigid surfaces and behind dry-lining walls. They are offered in white as standard and in red or blue to provide colour coding of pipe.
- **Collet Clips.** White and Grey collet clips are used with standard fittings to prevent accidental pipe disconnection. Red or blue clips provide colour coding of pipe. Red and blue clips should not be used to prevent accidental release of pipe.
- **Continuously Operated Re-Circulating Systems (Secondary Hot Water Circulation/Ring Main Installations):** A continuously operated re-circulating system is a water-replenished circulating system which is maintained at a constant high temperature to provide a constant source of hot water. Continuously operated re-circulating systems are used to distribute constant hot water to draw off points that may be distant from the source or hot water storage vessel. Continuously operated re-circulating systems are very different from conventional hot water supply and central heating systems found in domestic properties, for which our products have been tested to, under either BS7291 2010 Class S or WRAS approval standards, and for this reason Speedfit products must not be used on any continuously operated re-circulating systems as they are not approved under the current version of these standards. The exception would be those systems which have been designed for domestic situations with intermittent temperature of less than a maximum of 65°C. This is in accordance with BS7291.
- **System Testing.** To ensure the pipework and fittings have been installed correctly, whether it be on a new or extended system, it is essential that the system is checked and hydraulically wet tested. Testing should be at 2 bar for 10 minutes and 10 bar for 10 minutes. This testing, combined with other relevant checks, should reveal installation problems and is regarded as good plumbing practice. Speedfit Stop Ends and Plugs are particularly useful during this operation, enabling all outlets and any fittings to be easily plugged. However, system testing should not be regarded as a substitute for correct installation. See also "Making a Good Connection".
- **System Flushing.** As is usual practice for any plumbing installation, flushing of the system prior to the use of Speedfit is recommended to remove any contaminants/chemical residue from elsewhere in the system.
- **British Gas Service has accepted the John Guest Speedfit fittings as being suitable for open vented and sealed central heating systems and as eligible for acceptance onto its service contracts.**
- Products within this Price List are designed for use within UK plumbing and heating installations or in other countries where similar installation requirements apply. For information on products suitable for use in other countries please consult our Technical Advisory Service.
- **Vermin.** Speedfit products should not be used in vermin infested areas.
- **Maximum Torque Figures (BSP & BSPT).** Plastic threads are not generally as strong as brass threads. Customers and end users should be aware of this when choosing products for their applications. Overtightening of plastic threads will cause undue stress and eventual cracking and leakage. The maximum torque figures for BSP and BSPT threads used on Speedfit plumbing products in mating threads conforming to relevant BS or International thread standards are shown below.

Threads	Size	Maximum Torque
Plastic	1/2"	3.0 Nm
	3/4"	4.0 Nm
Brass	1/2"	4.0 Nm
	3/4"	5.0 Nm

It is recommended that all installations are checked prior to use to determine that a seal has been made.

- **Side Loads.** Fittings should not be subject to excessive side loads and they should not be used as support brackets. Tubing and fittings should be adequately supported to prevent excessive side loading.

## TECHNICAL CHECKLIST - UNDERFLOOR HEATING

- **Applications.** Underfloor Heating Installations in solid or timber floors.
- **Pipes.** 15mm JG Speedfit Barrier Pipe to BS 7291, Parts 1, 2 and 3 Class S.
- **DO NOT USE Speedfit UFH Products for Gas, Fuel Oil or Compressed Air Applications.**
- **Floor Insulation.** Should be a suitable material and thickness to comply with current regulations.
- **Minimum Bending Radii.** For Speedfit B-PEX Pipe is 175mm.
- **Expansion (PEX - Pipe).** 1% on length between 20°C and 82°C.
- **Cleaners, Inhibitors and Descalants.** For advice on the replenishment of additives such as corrosion inhibitors, the following manufacturers should be contacted Fernox Manufacturing Limited on 01799 550811 or Sentinel, BetzDearborn Limited on 0151420 9595.
- **Paint and Chemicals.** Only use water or oil based paint. DO NOT ALLOW CONTACT WITH cellulose based paints, paint thinners or strippers, solder flux or acid based descalants or aggressive household cleaning products.
- **Exposure to Sunlight.** Speedfit products, when used indoors, are not affected by sunlight. When used out doors protect from ultra violet light by lagging or painting.
- **Pipe Inserts.** Must be used on all installations when using plastic pipe and should be fully inserted.
- **Electrical Components.** Electrical products in the Speedfit Underfloor Heating System are designed only to be used in U.K. Electrical Supply situations.
- **Electrical Continuity.** If Speedfit is used in an existing metal system which may have been used for earthing, electrical continuity should be reinstated.
- **Collet Clips.** White and Grey collet clips are used with standard fittings to prevent accidental pipe disconnection. Red or blue clips provide colour coding of pipe. Red and blue clips should not be used to prevent accidental release of pipe.
- **Pre-Screed System Testing.** To ensure the pipework has been installed correctly and prior to the screed being laid, it is essential that the system is checked and hydraulically wet tested.

**Testing should be carried out at 2 bar for 10 minutes and 10 bar for 10 minutes.**

This testing, combined with other relevant checks, should reveal installation problems and is regarded as good plumbing practice.

- **Pressurisation During Screed Laying & Curing.** In accordance with BS1264-4, the system should be left under pressure at a minimum of 6 bar for the duration of the laying and curing of the screed.
- **Under NO circumstances should the UFH System be used to quicken the screed drying process.**
- **System Flushing.** As is usual practice for any plumbing installation, flushing of the system prior to the use of JG Speedfit is recommended to remove any contaminants/chemical residue from elsewhere in the system.
- **Vermin.** Speedfit products should not be used in vermin infested areas.
- **Frost Protection.** During the installation process it is important that pipe containing water be protected from frost.

## TECHNICAL CHECKLIST - FITTINGS FOR COLD WATER SERVICES

- **Applications.** Speedfit Fittings for Cold Water Services are designed to connect MDPE pipes (MRS-PE80) used above or below ground, to convey potable water from distribution mains to individual properties.
- **Pipes.** The Fittings can be used with:-
  - Blue MDPE pipe to BS6572.
  - Black MDPE pipe to BS6730.
  - Pipes conforming to ISO161/1, BS ISO11922 and DIN16893.
- **Adaptors.** Are available for:-
  - Copper to BS EN1057 and PEX or PB to BS7291.
  - Screwed pipe.
  - LDPE to BS1972 Class C and Class D in 1/2" and 3/4" sizes.
- **Fittings for PEX and Copper Pipe.** Must not be buried into ground, soil, concrete or other substrates.
- **Working Temperatures and Pressures.** Maximum working pressure 16 Bar @ 20°C.
- **Standards.** The Fittings are approved by the Water Regulations Advisory Scheme.
- **Performance.** The fittings are manufactured from tough plastic material well able to meet the stringent requirements of the water industry. They have been approved by the WRAS and, as such, have passed the 'pull out test' where a force shown below is applied to a connection between MDPE pipes and a fitting for 5 minutes without the connection failing.
- **Chemical Effects.** For below ground applications the fittings require no additional preparations - coating etc. When used above ground, avoid contact with aggressive chemical compounds. Protect from frost where necessary. In the United Kingdom, potable water does not contain high levels of chemicals (eg chlorine etc) that would adversely affect Speedfit Underground Fittings.
- **Exposure to Sunlight.** Permanent exposure to direct sunlight will necessitate lagging the fittings.
- **Pipe Inserts.** Pipe inserts must be used and fully inserted on all connections to MDPE, LDPE, PEX or PB pipe.
- **System Testing.** Pressure test to 1.5 times working pressure for 10 minutes before connecting to the mains supply. It is recommended that all pipe and fitting installations are pressure tested after installation before handing over to the final user
- **Maximum Torque Figures.** The maximum torque figures for BSP and BSPT threads used on Speedfit products are as follows:-

Size	Maximum Torque
1/2	3.0 Nm
3/4	4.0 Nm

It is recommended that all installations are checked prior to use to determine that a seal has been made.

The maximum torque figures quoted for use with Speedfit fittings are dependent on the mating thread conforming to the relevant British International thread standards.

Test Force	Size		
	20mm	25mm	32mm
Newtons	1900	2500	4100
lbs	427	562	921

- **DO NOT USE FOR Gas, Fuel Oil or Compressed Air Applications or Hot Water.**

# GENERAL CONDITIONS OF SALE

## 1. GENERAL

(a) These conditions and any special conditions agreed in writing between us and the purchaser shall apply to all by us and all orders and contracts for the manufacture or sale of goods accepted or carried out by us to the exclusion of any conditions in the purchaser's order terms or otherwise imposed by the purchaser.  
(b) All orders are subject to our written acceptance and in particular no binding contracts shall be created by the acceptance by the purchaser of a quotation or offer made by us unless and until we shall have accepted the order in writing.

## 2. DOCUMENTS

(a) Unless otherwise stipulated in our written acceptance all descriptions, illustrations, drawings in our catalogues and literature (copies of which are available on request) or submitted independently, estimates of performance, weights and measurements or other specifications provided by us are approximate only and we reserve the right to alter or amend the same at any time.  
(b) We reserve the right at any time to correct clerical or technical errors in the contract documents.  
(c) The purchaser shall furnish with his order all necessary specifications and information. We take no responsibility for goods manufactured, priced or delivered not in accordance with the order or the specifications unless the purchaser's order and specifications are clear and correct in every particular.

## 3. ADVISORY SERVICE

The advisory service which we provide in connection with our goods is part of our sales service and we do not make any charge for advice given. Any advice and assistance is given at the purchaser's risk and we shall not be liable for any loss, damage or claims arising therefrom.

## 4. HEALTH AND SAFETY AT WORK ACT

The purchaser's attention is drawn to the installation, maintenance and operating instructions given in our catalogues or literature. These should be carefully followed. Further information if required is available at our Head Office.

## 5. PRICES

(a) Unless otherwise stipulated all prices contained in our quotations and written acceptances are ex works and do not include the cost of packing. All orders are accepted on the condition that all such prices are subject to revision by us at any time before the goods are dispatched to take account of any increase in costs.  
(b) In the event of the whole order quoted for not being placed with us we reserve the right to revise our prices.  
(c) We also reserve the right to revise our prices if any changes are made by the purchaser in the specifications or quantities of the goods or delivery requirements after the order has been accepted.

## 6. VALUE ADDED TAX

VAT if not included in our quotation shall be added and payable where and at the rate applicable.

## 7. MINIMUM CHARGE

Depending on the product or service provided, a minimum order charge may be applicable. Details of these charges are as shown on current price lists or quotations or are available from the Customer Services Department.

## 8. TERMS OF PAYMENT

(a) Unless otherwise stipulated in our written acceptance our terms of payment are 30 days from date of invoice.  
(b) Overseas business is accepted subject to special terms as to payment to be agreed prior to our written acceptance of the order.  
(c) Where the contract is to be or may be fulfilled in separate installments, deliveries or part payment for each such installment delivery or part shall be made under sub-clause (a) above as if the same constituted a separate contract.  
(d) We shall be entitled to interest on all sums overdue at the rate of two and one half percent above our bank's base rate from time to time in force.  
(e) In the event of the purchaser for any reason whatsoever failing within one calendar month of the due date for payment to effect any payment which may be due under the contract or any contract with us, or if he commits any breach of the contract, or if he becomes insolvent or commits any act of bankruptcy or calls a meeting of or enters into a competition with or for the benefit of his creditors, or being a body corporate, has a receiver appointed of its undertaking or assets or any part thereof or a winding up order is made against the purchaser or the purchaser goes into liquidation (save for the purpose or reconstruction or amalgamation), we shall thereupon be entitled, without prejudice to our other rights, forthwith to terminate the contract or any unfulfilled part thereof, or at our option to make partial deliveries.

## 9. CANCELLATION

No order or other contract may be cancelled or varied except by agreement in writing with us, and on such terms as we may stipulate.

## 10. HANDLING CHARGE

Goods supplied in accordance with the purchaser's order may later be returned to us at our discretion provided the goods are unused. The purchaser will be required to pay to us a handling charge of 15% to 30% of the then current list price of such returned goods, dependent on the condition of the goods.

## 11. TIME FOR DESPATCH

(a) All periods or dates quoted for despatch and delivery are approximate only.  
(b) We shall be entitled, without liability on our part and without prejudice to our other rights, to terminate the contract or any unfulfilled part thereof, or at our option to suspend or make partial deliveries if the completion or the manufacture of the goods by us or by our suppliers is prevented, hindered or delayed whether directly or indirectly by reason of the purchaser failing to furnish necessary information or instructions, or of any strikes, lock-outs, fire, flood, accident or damage to goods or delay in obtaining or inability to obtain through scarcity of materials, or any other cause whatsoever beyond our or our suppliers' reasonable control, whether such cause exists at the date of the order or not.

## 12. DELIVERY AND RISK IN GOODS

(a) Unless otherwise expressly agreed in writing, or as otherwise herein provided, delivery of the goods shall be deemed to be made when we have notified the purchaser that the goods are ready for despatch from our works and the risk in the goods shall thereupon pass to the purchaser. We shall not in any event be under any obligation to give to the purchaser the notice specified in Section 32 (3) of the Sale of Goods Act 1979.  
(b) Notwithstanding that our prices are ex works we are prepared by special contract to procure carriage or freight and insurance on behalf of the purchaser and at his cost in which event we shall be under no liability for damage in transit loss or damage to the goods beyond the point of which we contract to deliver the same.  
(c) The following provisions shall apply in relation to all deliveries of goods.  
(i) we will entertain no claim for damage in transit, shortage of delivery or loss of goods, unless in the case of damage in transit or shortage of delivery a separate notice in writing is given to the carrier concerned and to us within three days of the receipt of the goods, followed by a complete claim in writing within five days of receipt of the goods and in the case of loss of goods, a separate notice in writing is given to the carrier concerned and to us and a complete claim in writing made within thirty days of the date of consignment;  
(ii) where goods are accepted from the carrier concerned without being checked the delivery book of the carrier concerned must be signed 'not examined';  
(iii) we shall have the right to attend at the purchaser's premises to inspect any goods in respect of which any such claim is made and the purchaser shall retain such goods until we shall have inspected such goods or until we have notified the purchaser that we do not wish to inspect such goods;  
(iv) any breach of this condition shall dis-entitle the purchaser to any allowance in respect of the claim.  
(d) Without prejudice to our other rights, should the purchaser fail for any reason to send us forwarding instructions within ninety days after the date of our notification that the goods are ready for despatch or to accept delivery of the goods we shall be entitled at the purchaser's risk and expense to store the goods and/or to procure or effect storage of the goods elsewhere. Goods so stored shall be paid for as if they had been dispatched and/or accepted.

## 13. PROPERTY IN THE GOODS

Until further payment has been received by us for all goods whatsoever supplied at any time by us to the purchaser:  
(a) Property in the goods shall remain in us.  
(b) Subject to sub-clauses (c) and (d) below the purchaser shall be at liberty to sell the goods in the ordinary course of business on the basis that the proceeds of sale shall be our property and that the purchaser shall account to us on demand.  
(c) We may at any time revoke the purchaser's power of sale by notice to the purchaser if the purchaser is in default for longer than seven days in the payment of any sum whatsoever due to us or if we have bona fide doubts as to the solvency of the purchaser.  
(d) The purchaser's power of sale shall automatically cease if the purchaser becomes insolvent or commits any act of bankruptcy or calls a meeting of or enters into composition or arrangement with or for the benefit of his creditors, or being a body corporate has a receiver appointed of its undertaking or assets or any part thereof or a winding-up order is made against the purchaser or the purchaser goes into liquidation (save for the purposes of reconstruction or amalgamation).  
(e) Upon determination of the purchaser's power of sale under sub-clause (c) or (d) above the purchaser shall place the goods at our disposal and we shall be entitled to enter any premises of the purchaser for the purpose of removing such goods from the premises.

## 14. SPECIAL TOOLS OR DIES

Where it is necessary for us to manufacture or to purchase special tools, dies, jigs, mandrills in order to execute a contract the purchaser will be charged with a proportion of the cost of such special tools. Any such tools remain our property even when the purchaser has been charged with part of the cost.

## 15. TEST AND PERFORMANCE

(a) Our goods are, where practicable, submitted to our standard test before delivery. If special tests are required, these shall be made at our premises unless otherwise agreed, and will be charged extra.  
(b) We accept no liability for failure to attain any performance figures quoted by us unless we shall have specifically guaranteed them with an agreed sum as liquidated damages and the purchaser has suffered loss by reason of the failure to attain the figures quoted.  
(c) Any particulars of weights and measurements, power and consumption, power output or performance relating to the goods and like matters furnished by us to the purchaser in our catalogues, literature or otherwise, are approximate and are intended only to present a general idea of the goods to be supplied and unless previously agreed specifically in writing shall not form part of the contract.

## 16. FAULTS AND DEFECTS AND EXCLUSION OF LIABILITY

(a) We warrant that if within twelve months of delivery of the goods to the purchaser the purchaser returns immediately to our premises any of the said goods which he considers to be defective, carriage paid, properly packed and clearly marked with the purchaser's full name and address and any other information such as serial numbers which may be necessary to enable the goods to be identified, together with a complete description of the respects in which it is alleged that the goods are defective, such goods will be examined and should we be satisfied that the goods are defective, they will be repaired or new goods will be supplied in exchange and the goods so repaired or such new goods will be delivered to the purchaser free of charge at our premises provided that the foregoing warranty shall only be applicable if upon being required by us to do so the purchaser proves to our satisfaction:  
(i) that the defect was due solely to defective workmanship;  
(ii) that no alterations or repairs have been made to the goods except with our written consent;  
(iii) that the defect was not caused by incorrect or negligent handling or storage, disregard of operating instructions, over-loading, unsuitable work, faulty erection or any other default by the purchaser, his servants or agents;  
(iv) that the defect was not caused by fair wear and tear, accident, or any other matter beyond our reasonable control occurring after the date of receipt by the purchaser.  
(b) All costs and expenses, including freight charges, customs duties and insurance costs incurred in returning the goods to our premises in accordance with this condition shall be for the account of the purchaser. The benefit of this warranty shall not be assignable by the purchaser.  
(c) The warranty contained in sub-paragraph (a) above does not extend to any goods not manufactured by us although supplied by us nor does it extend to any second-hand or reconditioned goods. Goods not manufactured by us carry only the warranty (if any) of the makers and the purchaser is entitled to the benefit thereof only so far as we have the power to transfer it.  
(d) The terms of this condition are in lieu of all conditions, warranties or other terms as to description, fitness for purpose, condition, merchantability, quality or otherwise in respect of the goods or repaired or replacement goods whether expressed in the contract or implied by common law, custom or statute and notwithstanding that such purpose or condition may be, may become or may have been known to us. Apart from our obligation to repair or replace goods in accordance with the terms of this condition, we accept no liability in respect of the goods whether for consequential loss or loss of profits or damages to third parties or otherwise, to the extent permitted by law.

## 17. INDEMNITY

The purchaser shall indemnify us against all actions, claims, demands, penalties and costs by third parties in tort, or for infringement, or alleged infringement, of patents, registered designs or other industrial property rights, or otherwise arising, in connection with the goods or with their delivery or unloading or with work done by us on the goods manufactured in accordance with the purchaser's specifications.

## 18. LIEN

In addition to any right of lien to which we may by law be entitled we shall have a general lien on all goods of the purchaser in our possession (although such goods or some of them may have been paid for) for the unpaid price of any other goods sold and delivered to the purchaser by us under the same or other contracts.

## 19. WAIVER

Our rights shall not be affected or restricted by any indulgence or forbearance granted to the purchaser. No waiver by us of any breach shall operate as a waiver of any later breach.

## 20. LAW AND JURISDICTION

The rights and obligations of the parties and all the terms and conditions thereof any disputes arising out thereof shall be construed in accordance with English Law to the jurisdiction of the courts of which the purchaser shall submit.

## 21. GENERAL

If any of these conditions or any part thereof:  
(i) purports to exclude or restrict or limit any liability and such exclusion or restriction or limitation is prohibited or rendered void or unenforceable by any legislation to which it is subject;  
(ii) is itself prohibited or rendered void or unenforceable by any legislation to which it is subject;  
then the exclusion restriction or limitation on the condition or part thereof in question shall be so prohibited or rendered void or unenforceable to the extent to which it is prohibited or rendered void or unenforceable and no further and the validity or enforceability or any other part of these conditions shall not thereby be affected.

## John Guest Speedfit Limited

Horton Road, West Drayton, Middlesex UB7 8JL, England.  
Tel: 01895 449233 Fax: 01895 420321. [www.speedfit.co.uk](http://www.speedfit.co.uk)  
Technical Help Desk: 01895 425333



John Guest fittings and related products are specifically designed and manufactured by John Guest to the Technical Specifications set out in the John Guest Product Catalogues. All John Guest fittings and related products should be selected, installed, used and maintained in accordance with these Technical Specifications. It is the customer's / user's responsibility to ensure that John Guest fittings and related products are suitable for their intended applications, are properly installed and maintained and are used in accordance with the Technical Specifications. It is also the customer's / user's responsibility to provide it's own customers with any relevant technical information about John Guest products it supplies them.

Speedfit should not be used for gas, fuel oil or compressed air applications.

John Guest produce a push fit system of pipe and fittings for compressed air situations. See separate literature for details.

The company has a policy of continuous research and development and reserves the right to amend without notice the specification and design of all products illustrated in this catalogue. John Guest Speedfit reserve the right to change the colour and shape of products. Photographs are for illustration purposes only.

Subject to our Terms and Conditions of Sale shown on page 30.

**JG** John Guest® and **Speedfit**® are registered trademarks of John Guest International Limited © Copyright 2011.

AVAILABLE FROM:

Z2105/19/03/11